

# Litespan 2016 Cabinet Solutions for AT&T

# New Heat Exchanger, Fan & Alarm Control Replacements

**TAG # TF-LS2000-03**

(NEW Heat Exchanger)

**AT&T PID # ATT.200004394**

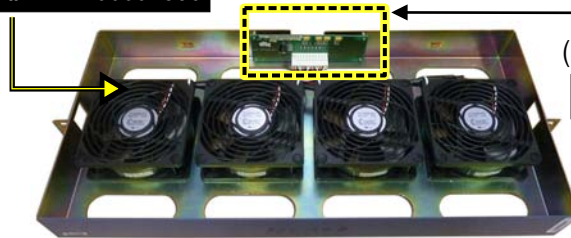


**(6) HEAT EXCHANGERS**  
ROOF HX ASSEMBLY

**TAG # TF-LS2000-44**

(NEW DFA Fan Kit - (4) New Fans per Kit)

**AT&T PID # ATT.200004556**



**(4) "DFA" TRAYS ARE SHOWN IN THIS CABINET**  
**(4 KITS = 16 FANS)**

Kit is shown installed  
in existing DFA fan tray,  
the tray IS NOT included



**TAG # TFC-DFA-01**

(NEW DFA Alarm Control Board)

**AT&T PID # ATT.200006507**

**(1) ALARM BOARD**  
**PER TRAY**

**TAG # TF-LS2000-02**

(NEW 48V Fan)

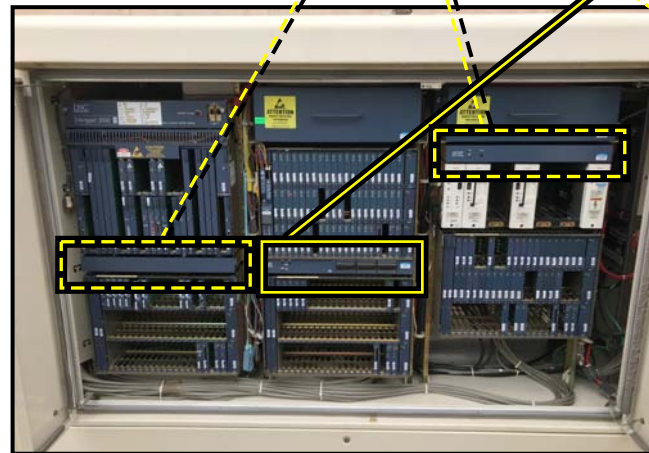
**AT&T PID # ATT.200002983**



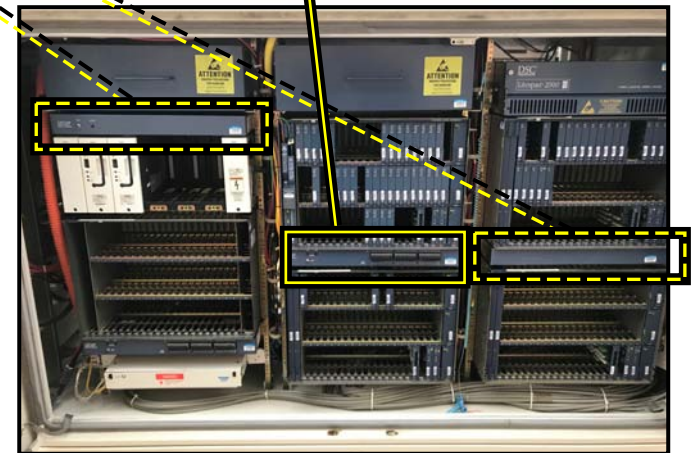
**(2) "PDFA" TRAYS**  
**ARE SHOWN IN THIS**  
**CABINET (6 FANS)**



**LS2016 CABINET (OUTSIDE VIEW)**



**LS2016 CABINET (INSIDE - FRONT VIEW)**



**LS2016 CABINET (INSIDE - BACK VIEW)**

150 Cooper Rd. (F-15)  
W. Berlin, NJ 08091

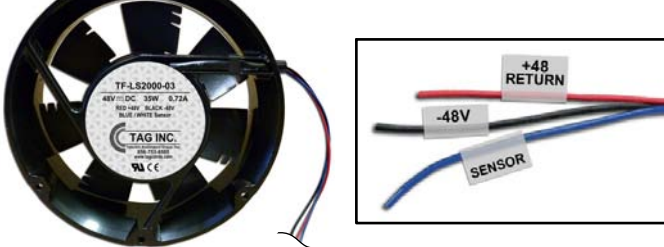
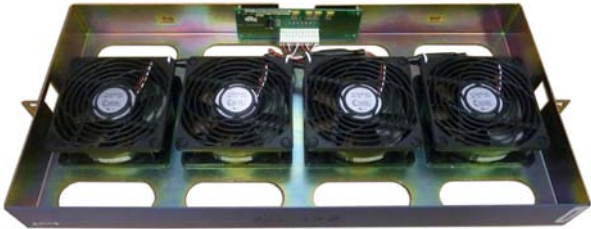

[www.tagcords.com](http://www.tagcords.com)

**Telecom Assistance Group**

Telephone: (856) 753-8585

Fax: (856) 768-7645

**Ordering Information:**

<p><b>TF-LS2000-03</b></p> <p><b>AT&amp;T PID #</b> <b>ATT.200004394</b></p>	<p><b>48V Heat Exchanger for Litespan 2016 Cabinet Roof HX Assembly</b></p> <p>w/ 3 Unterminated Leads - Red (+48 Return), Black (-48V), Blue (Sensor) <i>Includes (3) Butt Splices</i></p>	
<p><b>TF-LS2000-44</b></p> <p><b>AT&amp;T PID #</b> <b>ATT.200004556</b></p>	<p><b>Litespan 2000 DFA Fan Kit</b></p> <p>(4) <u>NEW</u> 48V Fans w/ Guard Grills - includes (16) plastic rivets &amp; (4) zip ties</p> <p>(1) <u>NEW</u> Wiring Harness w/ 12 Wire Plug</p> <p><i>use in existing DFA DC Fan Assembly <u>500-1100-XXX</u></i> <i>Individual fans (for splicing) can also be ordered, for a qty of (1) fan, order PN # TF-LS2000-04, AT&amp;T PID # ATT.200004558</i></p>	 <p>(fans only - tray is not included)</p>
<p><b>TFC-DFA-01</b></p> <p><b>AT&amp;T PID #</b> <b>ATT.200006507</b></p>	<p><b>Alarm Control Board for Litespan 2000 DFA Fan Trays</b></p> <p><i>use in existing DFA DC Fan Assembly <u>500-1100-XXX</u></i></p>	
<p><b>TF-LS2000-02</b></p> <p><b>AT&amp;T PID #</b> <b>ATT.200002983</b></p>	<p><b>48V Fan for Litespan 2016 Cabinet High Velocity PDFA Tray</b></p> <p>w/ 3 Wire Right Angle Connector <i>(includes plastic rivets)</i></p> <p><i>use in existing PDFA Fan Tray # <u>509-0000-XXX</u></i></p>	