

# OSP Cabinet Heat Exchangers & ECU

## "Cell Site Mesa Bridge Cabinet"

**PN # TF-MC179-01A**  
**Heat Exchanger Replacement for**  
**Mesa Bridge Cabinet (Upper - Internal)**  
**w/ 4 Wire Female Weatherproof Plug**

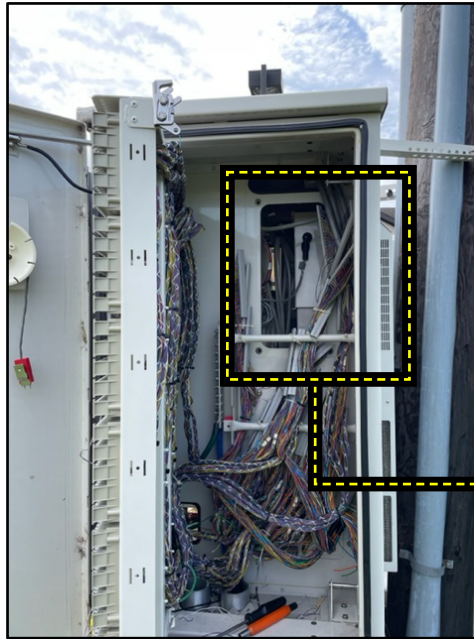


**Need a NEW Alarm Controller**  
**ECU for this Cabinet ?**  
**Order PN # TFC-MESA-01**

**MESA BRIDGE CABINET**  
 (FRONT VIEW)



**MESA BRIDGE CABINET**  
 (RIGHT SIDE - FAN VIEW)



**TF-MC179-01A**



### Ordering Information:

		<u>VZ ID #</u>
TF-MC179-01A	Heat Exchanger for Cell Site Mesa Bridge Cabinet (Upper - Internal) w/ 4 Wire Female Weatherproof Plug	7500 8057
TF-MC179-01	Heat Exchanger for Cell Site Mesa Bridge Cabinet (Lower - Door) w/ 4 Wire Female Weatherproof Plug - (not shown)	1136 5933
TFC-MESA-01	2 Port Mesa Cabinet Environmental Control Unit (ECU) - (not shown) (used in Mesa Cell Site Cabinets: XL, SOLE, Span XL, Bridge, Edge & Sport)	call for pricing

150 Cooper Rd. (F-15)  
 W. Berlin, NJ 08091

[www.tagcords.com](http://www.tagcords.com)

Telephone: (856) 753-8585  
 Fax : (856) 768-7645

**Telecom Assistance Group**