

Fujitsu 6200 Cabinet Solutions

New Fans & Heat Exchanger Replacements

TAG # TF-FUJ6200-01

MAT # 1359018

(NEW Heat Exchanger)

(2) IN EACH CABINET

HEAT EXCH. # 1



FUJITSU 6200 CABINET (OUTSIDE VIEW)

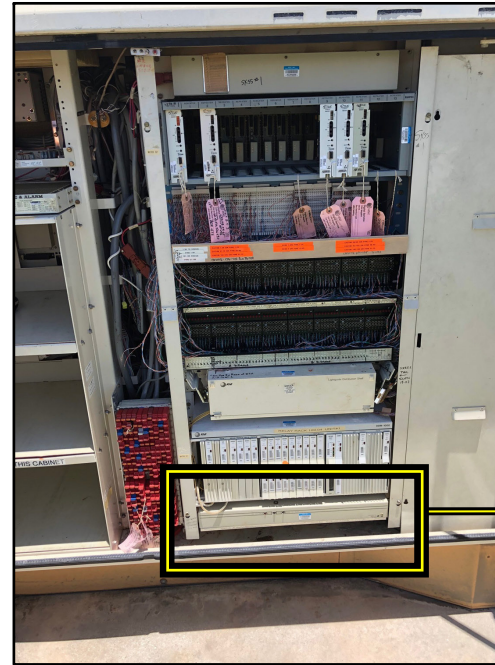
HEAT EXCH. # 2

(located on the right & left sides of the cabinet)

TAG # TF-FUJ6200-02

(NEW 48V Fan w/ Power Prongs)

(3) FANS IN EACH TRAY



FUJITSU 6200 CABINET (INSIDE VIEW)

**LORAIN / MARCONI
M.P.S.
428212000
FAN SHELF**

150 Cooper Rd. (F-15)
W. Berlin, NJ 08091

www.tagcords.com

Telecom Assistance Group

Telephone: (856) 753-8585

Fax : (856) 768-7645

Ordering Information:

<p>TF-FUJ6200-01 MAT # 1359018</p>	<p>48 Volt Replacement Heat Exchanger for Fujitsu 6200 Cabinets (Right & Left Side) w/ 5 Wire Plug</p>	 
<p>TF-FUJ6200-02</p>	<p>48 Volt Replacement Fan for Lorain / Marconi M.P.S. 428212000 Fan Shelf found in Fujitsu 6200 Cabinets w/ Power Prongs</p>	 <p>TF-FUJ6200-02</p>  <p>TF-FUJ6200-03</p>
<p>TF-FUJ6200-03</p>	<p>48 Volt Replacement Fan for Fujitsu 6200 Cabinet Tray w/ 3 Wire Open End & Power Prongs</p>	 
<p>TF-914EXMET-01 MAT # 1359017</p>	<p>48 Volt Replacement Fan for Siemens 914EX Metro MXU Trays w/ Power Prongs</p>	 