

# CommScope 52B Cabinet Solutions for Brightspeed

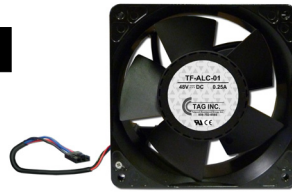
# New Fan Replacements

**TAG # TF-ALC-01**

**Brightspeed SAP MAT # 1337633**

(NEW 48V Fan  
w/ 3 Wire Plug & Tach Output)

**(1) TRAY IN  
EACH CABINET  
(4 FANS)**



**TAG # TF-COM6DF-01**

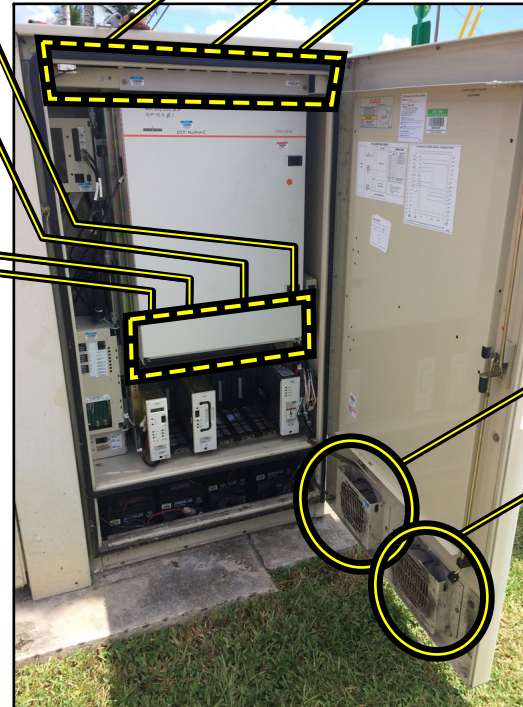
**MAT # 1355242**

(NEW 48V Fan  
w/ 3 Wire, 6 Pin Connector)

**(1) FAN ASSEMBLY  
IN EACH CABINET  
(3 FANS)**



**COMMSCOPE 52B CABINET (OUTSIDE VIEW)**



**INSIDE VIEW OF CABINET**



**TAG # TF-COM6BC-01**

**MAT # 1439621**

(NEW 48V Fan  
w/ 3 Wire, 4 Pin Connector)

**(2) FANS MOUNTED  
TO THE DOOR OF  
EACH CABINET**

150 Cooper Rd. (F-15)  
W. Berlin, NJ 08091

[www.tagcords.com](http://www.tagcords.com)  
**Telecom Assistance Group**

Telephone: (856) 753-8585  
Fax: (856) 768-7645

Ordering Information:		
<p><b>TF-ALC-01</b></p> <p><b>Brightspeed SAP MAT #</b> <b>1337633</b></p>	<p><b>48V Fan for Alcatel 7300 Fan Tray</b> w/ 3 Wire Plug &amp; Tach Output</p> <p><i>(use in 3EC 15478 (XXXX), 3EC 37933 (XXXX) &amp; 3EC 36760 (XXXX) Fan Trays</i></p>	
<p><b>TF-COM6DF-01</b></p> <p><b>MAT #</b> <b>1355242</b></p>	<p><b>48V Fan for Fan Assembly in CommScope 52B Cabinet</b> w/ 3 Wire, 6 Pin Connector (4' cable)</p> <p><i>(use in 6D/F fan assembly - HECI VAUCADY(XXX))</i></p> <p><i>(commonly used w/ existing 6 pin to 4 pin adapter cable in fan tray)</i></p>	
<p><b>TF-COM6BC-01</b></p> <p><b>MAT #</b> <b>1439621</b></p>	<p><b>48V Fan for CommScope 52B Cabinet Door</b> w/ 3 Wire, 4 Pin Connector (4' cable)</p>	