

Lucent (ALU) - Avaya

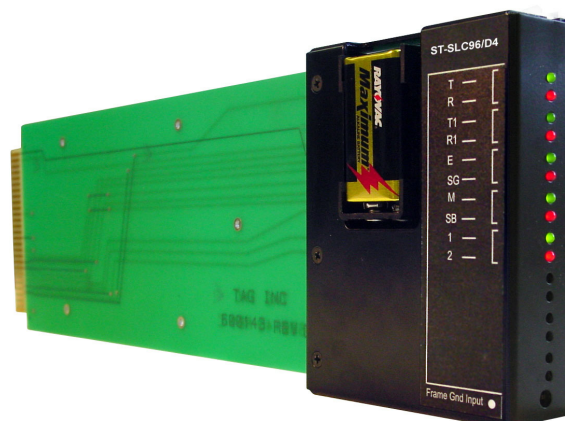


STB-SERIES5

Series 5 / LIU Streaker / Test Board
(w/ LEDs and Bantam Jacks)

Application:

The STB-SERIES 5 provides a multipurpose test board for testing SLC Series 5 Shelves. The STB-SERIES5 can test both Channel Unit Card Slots and LIU Card Slots. Does quick continuity test via LED's and also has bantam jacks for more extensive T1 testing when testing from LIU card slots.

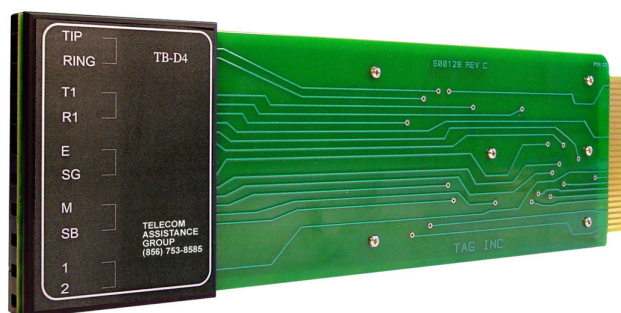


ST-SLC96/D4

SLC-96 / D4 Streaker Card
(w/ 9 volt battery and LEDs)

Application:

The ST-SLC96/D4 provides a quick method to "streak"- verify wiring via LEDs from the D4/SLC-96 backplane to the frame. At the frame simply ground the corresponding pins and the ST-SLC96/D4 will light the LED associated with that connection.

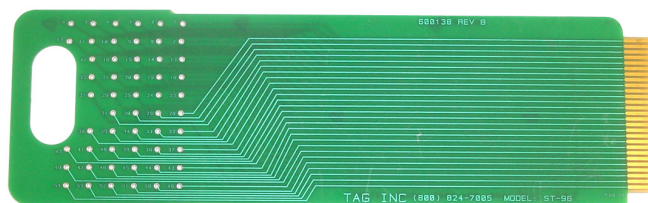


TB-D4

SLC-96/D4 Test Board
(w/ Pin Jacks)

Application:

The TB-D4 is an ideal tool for installing and maintaining D4 channel units or SLC-96 systems. The TB-D4 brings out the following pin-outs via pin jacks. Test equipment (volt/ohm meter) can be used to quickly identify opens, shorts, crosses and transmit & receive T1 signals between the Channel Bank and Frame.



ST-96

SLC-96/D4 Streaker Card
(w/o LEDs)

Application:

The D4/SLC-96 Test "Streaker" Board is the ideal tool for any technician working on D4 channel unit slots or SLC-96 systems. The ST-96 brings out all backplane pinouts (1 - 54). Small circular holes identifying the pin number make it easy to test with volt/ohm meter probes.

150 Cooper Rd. (F-15)
W. Berlin, NJ 08091

www.tagcords.com
Telecom Assistance Group

Telephone: (856) 753-8585
Fax: (856) 768-7645