
New OSP Cabinet Replacement Fans Available for Lumen/CenturyLink

Provided By:



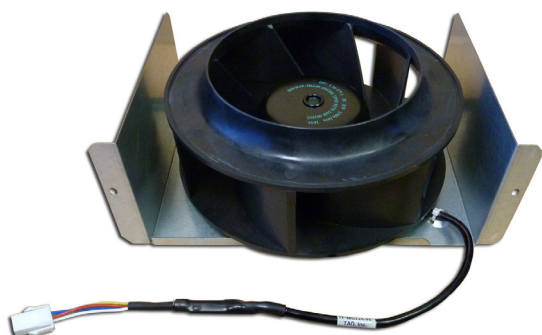
TAG INC.

Telecom Assistance Group, Inc.

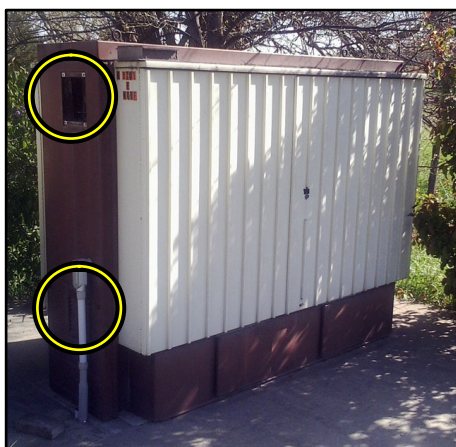
856-753-8585

www.tagcords.com

MESA CABINET HEAT EXCHANGERS



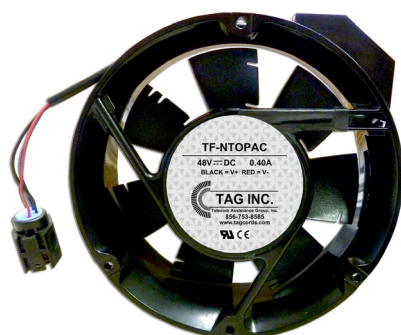
80 TYPE CABINET (SLC 2000) SOLUTIONS (HX, internal fans & alarm boards)



MARCONI MESA HEAT EXCHANGERS



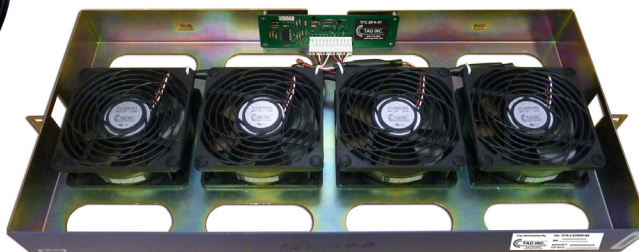
NORTEL OPAC / OPM ACCESS NODE FANS



FAN TRAY ALARM CONTROL BOARDS / UNITS & CABINET ECUs



NEW FAN TRAY REPAIRS - SAP CODES FOR ERT PROCESSING



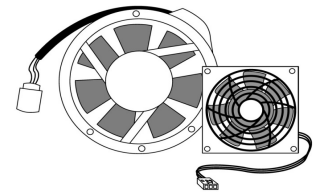
LITESPAN 2000 FANS



**DMS-100 OPM, NEC C-REX, COMMScope 6D/F, FUJITSU 6200, OPTI 6100,
LUCENT 2A / 2B / 2C, PURCELL, NOREN, SIEMENS, SLC96, UMC1000 & MORE**

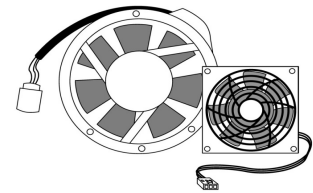
856-753-8585

**NEW Direct Replacement Fans
& Alarm Control Boards
for OSP Cabinets / Trays
Available for Lumen / CenturyLink**



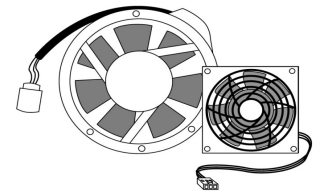
Part #	Description	MAT #	PG #
OSP CABINET / TRAY FANS & ALARM CONTROL BOARDS			
TF-NTOPAC	48V Fan for Nortel Opac / OPM Cabinet w/ Round Weatherproof Connector	1337634	1
TF-NTOPAC-3	48V Fan for Nortel Opac / OPM Cabinet w/ 3 Wire Open End (no connector)	1341516	1
TF-NTOPAC-02	48V Fan for Nortel Opac / OPM Cabinet w/ Sealed 3 Pin Plug	1337635	1
TF-NTOPAC-04	48V Fan for Nortel Opac / OPM Cabinet w/ Sealed 3 Pin Plug (Use w/ NT7A6986 adapter)	1341517	1
TF-NTOPAC-05	48V Fan for Nortel Opac Access Node Tray / 800A w/ 3 Wire (FPS Lead) & 3 Pin	7017863	2
TF-NTOPAC-05F	48V Fan for Nortel Opac Access Node Tray w/ Power Prongs, Untermin. FPS Lead		2
TF-NTANCFT-01	48V Fan for Nortel Access Node/Charles Fan Tray (92-FAN840-X) w/ 3 Wire Plug		2
TF-DMS06	48V Fan for BFU in DMS-100 OPM Cbnt w/ Pwr Prongs & Unterminated Tach Lead	1359400	3
TFR-8X06ABT	Tray Refurbish-Paddleless Alarm Conversion Upgrade for DMS OPM NT8X06AB		CALL
TF-SLC201-02	48V Heat Exchanger for 80 Type Cabinet w/ Round Screw on Connector (KS23912L4)	1337731	4/5
TFC-114A-01	114A Fan Control Unit for 80 Type Cabinet Heat Exchangers (equiv. to 106894934)	1355243	4/5
TFC-LU4-01	Alarm Control Board for Lucent 4A/4B, 4G/SLC2000 Trays & 114A Control Units	1355244	4/5
TF-SLCBC-01	48V Battery Cooling fan for 80 Type Cabinet w/ 3 Wire Plug	1461343	4/5
TFC-116A-01	Alarm Control Board for Lucent 116A Battery Fan Unit (customer supplied bracket)	1459078	4/5
TF-SLC201	48V Fan for SLC 2000 - Lucent 4A/4B Tray w/ 5 Wire Plug (KS23912L6)	1336047	4/5
TF-LU2A	48V Fan for Lucent 2A Fan Tray w/ 3 Leads & Fastons (KS22501L5)	1336048	6
TF-LU2B	48V Fan for Lucent 2B Fan Tray w/ 3 Wire Plug (KS22501L5A equiv.)	1336049	7
TF-LU2C	48V Fan for Lucent 2C Fan Tray w/ 3 Wire Plug (KS22501L5A equiv.)	1336060	7
TF-LU2C-02F	48V Fan for Lucent 2C Fan Tray w/ 3 Wires & Faston Connectors		CALL
TFC-LU2BC-01	Alarm Control Board for Lucent 2B & 2C Fan Trays (customer supplied fan trays)	1458909	7
TF-SLCAPW-01	(1) 48V Fan for SLC 2000 Cabinet - Reltec/Mclean APW Tray w/ 3 Wire Open End & (3) butt splices (use in existing tray # UJB17H48S22)	1358927	8
TF-SLCAPW-04	(4) 48V Fans for SLC 2000 Cabinet - Reltec/Mclean APW Tray w/ 3 Wire Open End & (12) butt splices (use in existing tray # UJB17H48S22)	1358928	8
TFC-SLCAPW-4	Alarm Control Board for Reltec/Mclean APW Fan Tray	1459111	8
TF-ALC7330-4	Alcatel 7330 VRAD Fan Kit w/ Quick Install Template Plate	1341518	CALL
TF-ALC7330-C	(1) 48V Fan for Alcatel 7330 VRAD Tray w/ 3 Wire Open End (for splicing)	1341616	CALL
TF-ALC1218-01	24V Fan for Alcatel 1218 Cabinet Fan Trays w/ 2 Wire, 3 Pin Connector		CALL
TF-ALC1218-02	48V Fan for Alcatel 1218 Cabinet Roof w/ 2 Unterminated Leads		CALL
TF-ALC7342-01	48V Fan for Nokia 7342 Rolt Fan Tray w/ 4 Wire Plug		CALL
TF-COM6DF-01	48V Fan for CommScope Cabinet, 6D/F Bay, HECI VAUCADY(XXX) w/ Internal Thermal Sensor & 3 Wire, 6 Pin Connector (4' cable)	1355242	9
TF-COM6DF-02	48V Fan for CommScope Cabinet, ALP HX Door w/ 5 Wire, 6 Pin Conn (4' cable)		9
TF-COM6DF-02R	48V Fan for CommScope 52/82 Cabinet, HX Door w/ 5 Wire, 6 Pin Connector (4' cable) (includes (1) 10k thermistor extension cable)	1465437	9
TF-COM6DF-04	48V Fan for CommScope Cabinet, 6D/F Bay, HECI VAUCADY(XXX) w/ Internal Thermal Sensor & 3 Wire, 4 Pin Connector (4' cable)	1466315	9
TF-COM6BC-01	48V Fan for CommScope Cbnt, 6B/C Battery / ALP HX Door w/ 3W, 4 Pin (4' cable)	1439621	9
TF-COM52E-01	48V Fan for CommScope 52E Cbnt, Battery w/ (1) 2W, 4 Pin & (1) 2W, 2 Pin (4' cable)	1466728	9
TFT-COM48B-01	"Salt Air Door Fan Tray" 3-Fan Stainless Steel Assembly for CommScope ALP 448/248 HX Door Fans (includes: (3) NEW 48V FANS (# TF-COM6DF-02B) & Grommet)		10
TF-FUJ6200-01	48V Heat Exchanger for Fujitsu 6200 Cabinet w/ 5 Wire Plug	1359018	11
TF-FUJ6200-02	48V Fan for Lorain / Marconi M.P.S. 428212000 Fan Shelf found in Fujitsu 6200 Cabinets w/ Power Prongs		11
TF-FUJ6200-03	48V Fan for Fujitsu 6200 Cabinet Tray w/ 3 Wire Open End & Power Prongs		11
TF-UMC1000-01	48V Fan (120mm) for Tellabs UMC1000 Tray w/ 3 Wire Plug (use in AFC Tray w/ 6 fans)	1466657	12
TFC-UMC1000-06	Alarm Control Board for Tellabs UMC1000 Tray (use in AFC tray w/ 6 fans)		12
TF-UMC1000-02	48V Fan (80mm) for Tellabs UMC1000 Tray w/ 3 Wire Plug (use in AFC Tray w/ 10 fans)	1466656	12
TF-UMC1000-03	48V Fan (120mm) for Tellabs UMC1000 Tray w/ 4 Wire Plug (use in Tellabs Tray w/ 8 fans)	1466761	12
TF-UMC672-01	48V Fan for UMC672 Cabinet w/ 2 Wire Plug (fan only, use with existing metal housing)		12
TF-CREX-01	48V Round Fan for NEC C-REX Cabinet w/ 4 Wire Plug (use in Zhone / NEC ISC-303 trays)	1355199	13
TF-CREX-02	48V Square Fan for NEC C-REX Cabinet w/ 2 Wire Open End (use in # F2876A)	1355240	13
TFC-F2876A	Alarm Control Board Replacement for NEC Fan Shelf # F2876A	1479394	13
TF-CREX-03	48V Fan for NEC C-REX Cabinet ECU w/ 3 Wire Open End (use in NEC Y4899A/74884A)	1461017	13
TF-DISCSCPU-01	48V Cooling Fan for DISC*S CPU w/ 2 Wire Open End (fan only, use with existing bracket)	1479944	14
TF-AI-SCT-01	48V (80mm) Fan for AISCOUT w/ 3 Wire Right Angle Plug		14
TF-CN5150HX-01	48V Heat Exch. for Telamon/Ciena 5150 EMUX Cbnt Door w/ 4 Wires & Seated Connector		14

**NEW Direct Replacement Fans
& Alarm Control Boards
for OSP Cabinets / Trays
Available for Lumen / CenturyLink**



Part #	Description	MAT #	PG #
OSP CABINET / TRAY FANS & ALARM CONTROL BOARDS - continued from previous page			
TF-ES660-01	24V (60x25mm) Fan for Lucent ES660 Rectifier Unit w/ 2 Wire Plug		15
TF-RECARGUS-01	12V (80mm) Fan for Argus Rectifier w/ 2 Wire Plug		15
TF-RECARGUS-02	24V (80mm) Fan for Argus Rectifier w/ 2 Wire Right Angle Plug	1474133	15
TF-RECARGUS-03	24V (80mm) Fan for Argus Rectifier w/ 2 Wire Right Angle Plug & Threaded Inserts		15
TF-RECARGUS-04	12V (120mm) Fan for Argus Rectifier w/ 2 Wire Open End		15
TF-DCORLS-01	48V Fan for Stromberg Carlson DCO RLS Cabinet Tray w/ 3 Fastons & Power Prongs	1481914	16
TF-SPB-AC01	120VAC Fan for Seiscor / Pulsecom "B" Cabinet w/ Power Prongs		16
TF-SPD-AC01	110VAC Fan for Seiscor / Pulsecom "D" Cabinet w/ Power Prongs & Guard Grill		16
TFT-SLC96-AC01	110VAC Fan w/ Bracket Assembly for SLC96 (36 Type) Cabinet (KS22099L5)	1356198	17
TFT-SLC96-AC01L	110VAC (Low Temp) Fan w/ Bracket Assembly for SLC96 (36 Type) Cbnt (KS22099L5)		17
TF-SLC96-AC02	110VAC Fan (fan only) for SLC96 (36 Type) Cabinet (for Fan Assembly KS22099L5)	1356199	17
TF-LS2000-01	48V Fan for Litespan 2000 PDFA w/ 3 Wire Plug & Grd Grill (use in # 500-1126-723)	1341519	18
TFC-PDFA-X2	Alarm Control Board for Litespan 2000 PDFA Trays (use in Fan Tray # 500-1126-723)		18
TF-LS2000-02	48V Fan for Litespan 2000 High Velocity PDFA w/ 3 Wire Connector (for 509-0000-XXX)	1356400	18
TFC-PDFA-01	Alarm Control Board for Litespan 2000 HV PDFA Fan Trays (use in # 509-0000-086/163)		18
TF-LS2000-03	48V Heat Exchanger for Litespan 2000 Cabinet w/ Unterminated Leads	1359389	19
TF-LS2KSB-01	48V Heat Exchanger for Litespan 2000 Cabinet Heat Stack w/ Power Prongs	1496549	19
TF-LS2000-44	Litespan 2000 DFA Fan Kit (includes: (4) 48V Fans w/ Guard Grills & (1) Wiring Harness w/ 12 Wire Plug (use in tray # 500-1100-XXX))	1445489	19
TF-LS2000-04	(1) 48V Fan for Litespan 2000 DFA w/ 3 Wire Open End (use in tray # 500-1100-XXX)	1445620	19
TFC-DFA-01	Alarm Control Board for Litespan 2000 DFA Fan Trays (use in tray # 500-1100-XXX)	1458948	19
TF-ACABTZ-01A	48V HX (Tarzan) for Litespan 2000 (LSC-2030) Cabinet (includes Adapter Cable)	1359388	20
TF-ACABLHX-01	48V Heat Exchanger (Lower) for Litespan 2000 LSC-2030 Cabinet	1460436	20
TF-LRA25B50-01	24V Fan for A25B50 Rectifier Unit (Lorain / Marconi) w/ 3 Wire Plug		21
TF-LPCM-01	24V Fan (80mm) for Lorain Power Conversion Module w/ 3 Wire Male Plug (fan only)		21
TF-LPM-01	48V Fan for Lorain Power Module w/ Power Prongs (fan only - use in existing # 427215900)		21
TF-MESACL-01	48V Fan for Marconi Current Limiter w/ 3 Wire Plug (Equiv. to MD48B6NDNX)		21
TF-MCABTZ-01	48V Heat Exchanger (Tarzan) for Marconi Mesa "Top" HX Cabinet w/ 3 Wire Plug	1359387	22
TF-MESA6-01	48V Heat Exch. for Marconi Mesa "Bottom" HX Cbnt w/ 3 Wire Plug	1359091	22
TF-MARCTOP-01	48V Fan for Marconi Cabinet (Top/Inside) w/ Power Prongs		CALL
TFC-FA400-01	Alarm Control Board Replacement for Marconi Mesa Master Tray	1479565	23
TF-FA400-01	48V Fan for Marconi Mesa Cabinet Master Fan Tray w/ 3 Wire Plug	1439622	23
TF-FA400-02	48V Fan for Marconi Mesa Cabinet Slave Fan Tray w/ 3 Wire Plug	1439623	23
TFC-MARC6-01	6 Position Environmental Control Unit (ECU) for Marconi Cabinet (supports 6 HX fans)	1461075	24
TF-MESA384-01	48V (External) HX for Mesa DSLAM 384 Cbnt w/ 4 Wire (Round) (F) Wthproof Plug		25
TF-MESA384-02	48V (Internal) HX for Mesa DSLAM 384 Cbnt w/ 4 Wire (Square) Female Plug		25
TFC-MESA-04	4 Port Environmental Control Unit (ECU) (used in Mesa 2 - DSLAM 192 & 384)		25
TFC-MESA-02	2 Port Environmental Control Unit (ECU) (used in Mesa 2 - DSLAM 192 Type Cabinets)		CALL
TFC-MESA246-01	6 Fan Environmental Control Unit (ECU) for Remote Cabinet Sites	1461124	26
TFCS-MESA246-08	Extension Cable for Mesa Fan Controllers, (8')	1475550	26
TFC-WORX-FAM1	PowerWorx Front Access Fuse Panel (Equiv. to ADC # TFA-FAM)		27
TFT-NXWDL-02	TAG Universal 19/23 "Harsh Environment" Cabinet Fan Tray (fits 19" & 23" bays) (includes NEW Fan Tray w/ Thermostat, LEDs, Test Button & (3) NEW 48V Fans)	1472248	28
TFT-NXTLEV-03MC	TAG Fan Tray for Next Level Cabinet (includes NEW Fan Tray & (3) NEW 48V Fans)	1444040	28
TF-NXTLEV-03	48V Fan Assembly for Next Level Cabinet Fan Trays (includes (3) 3 Wire Fans)	1358901	28
TFT-NXWDL-01	TAG Universal 19/23 Cabinet Fan Tray (fits 19" & 23" bays) (includes NEW Fan Tray w/ Thermostat, LEDs, Test Button & (3) NEW 48V Fans)	1451023	28
TF-MC133-02	(133mm) Heat Exch. for Mesa 768 Csbnt w/ 3 Pin Plug	1355448	29
TF-MC133-05	(133mm) Heat Exchanger for Mesa Sport Cabinet w/ 3 Pin Bulkhead Plug	1482855	29
TF-CSHX133-01	(133mm) Heat Exch. for Cell Site Mesa Sport Cabinet w/ 4 Pin (M) Weatherproof Plug		29
TF-MC133-01	(133mm) Heat Exch. for Purcell FlexAir 741 Cabinet (Door) w/ 4 Leads & Fastons	1358926	30
TF-MC175-04	(175mm) Heat Exchanger for Purcell A009 Cabinet w/ Weatherproof Connector		30
TF-MC175-04-KIT	(175mm) HX KIT for Purcell A009 Cabinet w/ Weatherproof Connector & Mounting		30
TF-SRA200-01	(175mm) Heat Exchanger for SRA-200 Cabinet w/ 3 Wire Plug (fan only)	1492655	31

**NEW Direct Replacement Fans
& Alarm Control Boards
for OSP Cabinets / Trays
Available for Lumen / CenturyLink**



Part #	Description	MAT #	PG #
OSP CABINET / TRAY FANS & ALARM CONTROL BOARDS - continued from previous page			
TF-MC175-02	(175mm) HX for Mesa 4 NXT Cabinet w/ 3 Wire Plug (for Siemens ICN 087-23500-10)	1358925	31
TF-MC175-03	(175mm) Heat Exchanger for OSP Cabinet w/ 3 Pin Plug	1358924	31
TF-MC175-03W	(175mm) Heat Exchanger for Tellabs 1000 w/ 3 Unterminated Leads	1458675	CALL
TF-MC175-01	(175mm) Heat Exchanger for Siemens 914EX Metro MXU Cabinet w/ 2 Wire Open End	1467133	32
TF-914EHX-01	48V HX for Siemens 914E RT Cbnt w/ Power Prongs		32
TF-914EXMET-01	48V Fan for Siemens 914EX Metro MXU Fan Tray w/ Power Prongs	1359017	32
TF-OPTI-01	12V Fan for Opti 6100 Fan Trays w/ 3 Wire Plug (use in EFANM Fan Tray # 1184508L2)	1444322	32
TF-TA5KHx-02	48V "Low Profile" Heat Exchanger for Adtran TA5000 Cabinet Door w/ 4 Wire Plug	1501884	33
TF-HX175LP-01	(175mm) "Low Profile" HX for Calix ODC Cbnt Door w/ Grommet, 4 Leads & Fastons	1452035	34
TF-HX220LP-01	(220mm) "Low Profile" HX for Calix ODC-1000 w/ 4 Leads & Faston Connectors	1477798	34
TF-OPM640HX	(175mm) "Low Profile" Impeller for OPM 640 Cbnt (Retro Fit Roof) w/ 3 Wire, 4 Pin Plug	1492516	35
TF-AFCHX-01	(175mm) "Low Profile" Heat Exchanger for AFC Fan Unit found in OPM Cabinets	1475725	35
TF-CATNHX-01	(175mm) "Low Profile" HX for Catena Cbnt w/ (1) 2 Wire Plug & (1) 3 Wire, 4 Pin Plug		35
TF-MC179-01A	Heat Exch. for Mesa Bridge Cabinet (Upper - Internal) w/ 4W Female Wthrproof Plug	1490468	36
TF-MC179-01	Heat Exch. for Mesa Bridge Cabinet (Lower - Door) w/ 4W Female Weathrproof Plug		36
TF-CQ250-01	(250mm) HX for Ice Qube Cabinet w/ 4 Wire Open End		36
TF-AFC672-01	48V Fan for AFC Cabinet Heat Stack w/ Power Prongs	1456851	36
TF-CLXODC-01F	48V Heat Exchanger for Calix ODC Stack w/ 2 Wires & Faston Connectors	1456478	37
TFC-CALIX2KHx	Alarm Control Board for Calix ODC-2000 Cabinet HX Controller (alarm board only)	1481590	37
TFCS-CLX2KHx	Power Cable for Calix ODC-2000 Cabinet HX Controller (equiv. to 315-00420)	1490190	37
TF-CLX225-02	(225mm) HX Impeller Fan (Upper) for Calix ODC Cabinet w/ 4 Wire Female Plug (30")	1492772	38
TF-CLX225-03	(225mm) HX Impeller Fan (Lower) for Calix ODC Cabinet w/ 4 Wire Male Plug (30")	1492619	38
TF-CLX133-01	(133mm) HX Impeller Fan (Upper/Lower) for Calix Cabinet w/ 4 Wire Plug	1490163	38
TF-MCCHX-AC01	110VAC HX Blower for Reltec / McLean Cabinet w/ Pwr Plug & Adapter Plate (fan only)	1481410	39
TF-MCCHX-AC0R	110VAC (Right) HX Blower for Reltec/McLean Cbnt w/ Pwr Plug & Adapt Plate (fan only)	1493505	39
TF-TX33HX-01	(175mm) HX for Mclean ClimaGuard Cabinet Cooler w/ 4 Wire Weatherproof Conn.	1473428	39
TF-TX38HX-01	(225mm) HX for Mclean ClimaGuard Cabinet Cooler w/ 4 Wire Weatherproof Conn.	1473110	39
TF-NP0402-01	48V Heat Exchanger for Noren Cooling Unit - Internal (6.71K) w/ 3 Wire Open End	1359090	40
TF-NP0414-02	48V Heat Exchanger for Noren Cooling Unit - External (8.45K) w/ 3 Wire Open End	1359019	40
TF-MC225-01	(225mm) Heat Exchanger for Mesa Cabinet (Top) w/ Round Wthrprf Conn. (fan only)	1345222	41
TF-MC225-02	(225mm) Heat Exchanger for Mesa Cabinet (Bottom) w/ 4 Wire Plug	1345223	42
TF-MC225-02-KIT	(225mm) Heat Exch. KIT for Mesa Cabinet (Bottom) w/ 4 Wire Plug & Mounting Bkt.	1451725	42
TFB-MC225-02	Mounting Bracket & Hardware for Mesa Cabinet 225mm Bottom Heat Exchanger	1451078	42
TFC-MESA-01	2 Port Mesa Cabinet ECU (Cell Site: XL, SOLE, Span XL, Bridge, Edge & Sport)		43
LUMEN / CENTURYLINK FAN TRAY REPAIR – SAP CODES FOR ERT PROCESSING			
TAG refurbishes fan trays with NEW replacement parts that match the form, fit & function of original equipment manufacturer			
Part #	Description	SAP #	PG #
TFR-ALC1000-01	FAN TRAY REPAIR, Alcatel Fan Tray Assembly (3EC 15478)	1025443	44
TFR-SLCAPW-01	FAN TRAY REPAIR, Reltec/McLean SLC APW Fan Tray (UJB17H48S22)	1062881	44
TFR-LU2A-01	FAN TRAY REPAIR, Lucent 2A Fan Unit (T1AYAA)	1451702	44
TFR-LU2B-01	FAN TRAY REPAIR, Lucent 2B Fan Unit (COMCODE: 105550420)	1201093	44
TFR-NXTLEV-01	FAN TRAY REPAIR, Next Level (T03MC 039167)	1136989	45
TFR-F2876A-01	FAN TRAY REPAIR, NEC (F2876A)	1025443	45
TFR-UMC1000-06	FAN TRAY REPAIR, Tellabs UMC1000, (6 fan) (AFC Tray # 0310-1716 or 8650-0414)	CALL	45
TFR-UMC1000-08	FAN TRAY REPAIR, Tellabs UMC1000, (8 fan) (Tellabs Tray # 4195091)	CALL	45
TFR-UMC1000-10	FAN TRAY REPAIR, Tellabs UMC1000, (10 fan) (AFC Tray F10 # 0310-1716)	CALL	45
TFR-NXWDL-01	FAN TRAY REPAIR, TAG Universal 19/23" Cabinet Fan Tray	1451023	45
TFR-NXWDL-02	FAN TRAY REPAIR, TAG Universal 19/23" "Harsh Environment" Cabinet Fan Tray	1472248	45
TFR-LU2C-01	FAN TRAY REPAIR, Lucent 2C Fan Unit (COMCODE: 106382336 / 109198341)	1088888	46
TFR-LU4A-01	FAN TRAY REPAIR, Lucent 4A Fan Unit (COMCODE: 106526742)	1237468	46
TFR-LU4B-01	FAN TRAY REPAIR, Lucent 4B/4G Fan Unit (COMCODE: 106527005 / 107378036)	1201094	46
TFR-114A-01	FAN TRAY REPAIR, 114A Fan Control Unit (COMCODE: 106894934)	1134261	46
TFR-LS2000-02	FAN TRAY REPAIR, Litespan 2000 HV PDFA Fan Tray (509-0000-086)	1164081	46
TFR-LS2000-44	FAN TRAY REPAIR, Litespan 2000 DFA Fan Tray (500-1100-400)	1006831	46

Don't see the fan you are looking for? Send us a sample & we will find a match!

PLEASE CALL: 856-753-8585 or EMAIL: custsvcs@tagcords.com

OSP Cabinet Replacement Fans

"OPAC / OPM"

PN # TF-NTOPAC

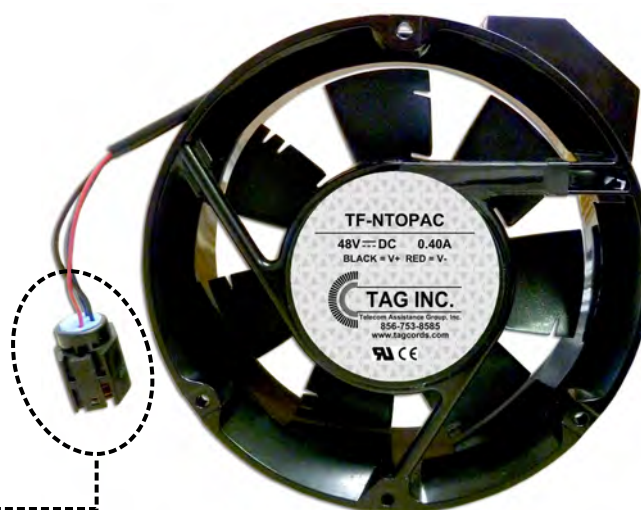
48 Volt Replacement Fan for
Nortel Opac / OPM Cabinet
w/ Round Weatherproof Connector

(Replaces Nortel # A0381740 / # A33230 (-51)),

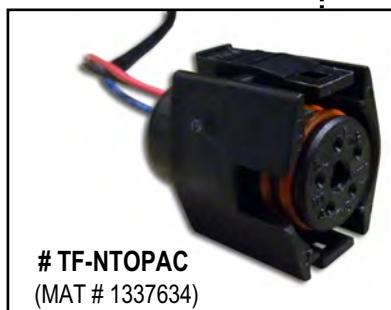
Fits first generation

Access Node 800A heat exchangers

(fan only - use with existing guard grill)



**WEATHERPROOF
CONNECTOR**
on PN # TF-NTOPAC



Looking for fans w/ sealed 3 pin plugs?



TF-NTOPAC-04
(MAT # 1341517)



TF-NTOPAC-02
(MAT # 1337635)

Ordering Information:

Lumen/CLK MAT

TF-NTOPAC	48 Volt Replacement Fan for Nortel Opac / OPM Cabinet w/ Round Weatherproof Connector (Replaces Nortel # A0381740 / # A33230 (-51)), Fits first generation Access Node 800A heat exchangers	1337634
TF-NTOPAC-3	48 Volt Replacement Fan for Nortel Opac / OPM Cabinet - (not shown) w/ 3 Wire Open End (no connector) (Splicing Replacement option for both Access Node 800A & OPAC Cabinets)	1341516
TF-NTOPAC-04	48 Volt Replacement Fan for Nortel Opac / OPM Cabinet w/ Sealed 3 Pin Plug (Used with NT7A6986 adapter)	1341517
TF-NTOPAC-02	48 Volt Replacement Fan for Nortel Opac / OPM Cabinet w/ Sealed 3 Pin Plug (Replaces Nortel # A0640820 / # A33230 (-51))	1337635
TFG-162KIT-01	Guard Grill Replacement Kit for Round 162mm Fans - (not shown) (includes hardware)	

150 Cooper Rd. (F-15)
W. Berlin, NJ 08091

www.tagcords.com

Telephone: (856) 753-8585
Fax : (856) 768-7645

Telecom Assistance Group

OSP Cabinet Replacement Fans



"ACCESS NODE / 800A"

PN # TF-NTOPAC-05

48V Replacement Fan for
Nortel Opac Access Node Tray
/ 800A Cabinet

w/ 3 Wire (w/ Blue FPS Lead)
& 3 Pin Plug

(use in tray # NT4K0610)



(Charles Tray Fans (92-FAN840-X)
are also available - order
TF-NTANCFT-01 (call for pricing)

NT4K0610 FAN TRAY (HAS (8) FANS)
(fan tray is not included)



Ordering Information:

Lumen/CLK MAT #

TF-NTOPAC-05 (with plug)	48V Fan for Nortel Opac Access Node Tray / 800A Cabinet w/ 3 Wire (w/ Blue FPS Lead) & 3 Pin Plug (use in tray # NT4K0610)	7017863
TF-NTOPAC-05F (without plug)	48V Fan for Nortel Opac Access Node Tray / 800A Cabinet - (not shown) w/ Power Prongs, Unterminated FPS Lead & (1) Butt Splice (use in tray # NT4K0610)	
TF-NTANCFT-01	48V Fan for Nortel Access Node / Charles Fan Tray w/ 3 Wire Plug (use in tray # 92-FAN840-X)	

150 Cooper Rd. (F-15)
W. Berlin, NJ 08091

www.tagcords.com

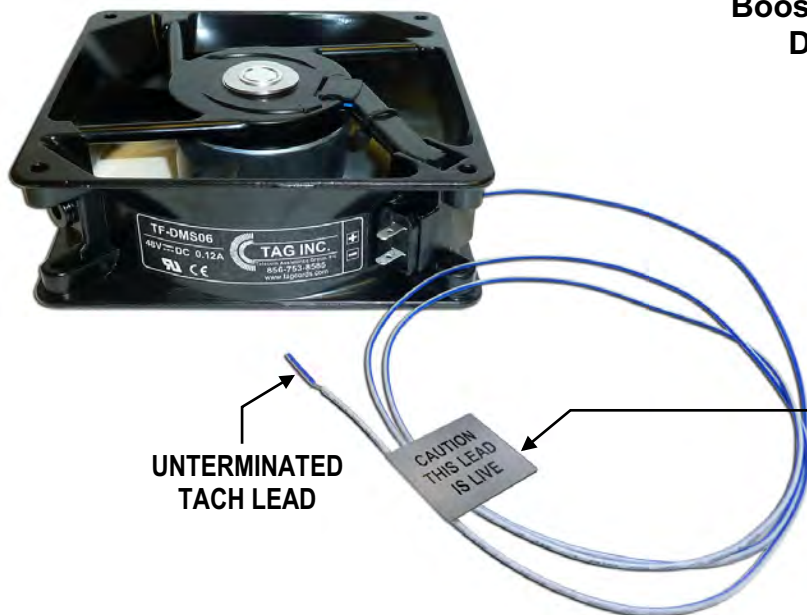
Telephone: (856) 753-8585
Fax : (856) 768-7645

Telecom Assistance Group

OSP Cabinet Replacement Fans

"DMS-100 OPM BFU / DMS-1 URBAN"

(Not for use in Nortel Access Node Fan Trays)



PN # TF-DMS06

48V Replacement Fan for
Booster Fan Unit (BFU) found in
DMS-100 OPM Cabinets

w/ Power Prongs,
Unterminated Tach Lead
& (1) Butt Splice

DMS-100 OPM CABINET BOOSTER FAN UNIT (BFU) w/ EXISTING FANS



Also used in DMS-1
URBAN EMC RT BAY
(NT4A44AA fan unit)

Ordering Information:

TF-DMS06 **48V Fan for Booster Fan Unit (BFU)**
found in DMS-100 OPM Cabinets
w/ Power Prongs, Unterminated Tach Lead & (1) Butt Splice
(also used in DMS-1 URBAN EMC RT BAY (NT4A44AA fan unit))

Lumen/CLK MAT #

1359400

150 Cooper Rd. (F-15)
W. Berlin, NJ 08091

www.tagcords.com

Telephone: (856) 753-8585
Fax : (856) 768-7645

Telecom Assistance Group

80 Type/SLC 2000 Cabinet Solutions for Lumen/CenturyLink

New Heat Exchanger, Fan & Alarm Control Replacements

Heat Exchangers

TAG # TF-SLC201-02
(NEW Heat Exchanger)
Lumen/CLK MAT # 1337731

(2) MOUNTED ON CABINET SIDE (TOP & BOTTOM)

116A Control Unit (Battery)
- reverse side of cabinet

TAG # TF-SLCBC-01
(NEW Battery Cooling Fan)
(1) FAN PER CABINET
Lumen/CLK MAT # 1461343

Battery Cooling

4A / 4B Fan Trays

TAG # TFC-LU4-01
(NEW Alarm Control Board)
Lumen/CLK MAT # 1355244

(1) ALARM BOARD PER TRAY

TAG # TF-SLC201 (NEW 48V Fan)
Lumen/CLK MAT # 1336047

(2) FAN TRAYS SHOWN IN THIS CABINET (4 FANS TOTAL)

Fans are shown installed in existing fan tray, *the tray IS NOT included*

(NEW Power Cables for 4A/4B Fan Trays are available, order # TFC-S-LU4APA-06)

114A Control Unit

TAG # TFC-114A-01*
(NEW Heat Exchanger Control Unit)
Lumen/CLK MAT # 1355243

* if metal housing is not needed, order # TFC-LU4-01
Lumen/CLK MAT # 1355244

80 TYPE CABINET (INSIDE VIEW)

TAG # TFC-116A-01
(NEW Alarm Control Board for Lucent 116A Battery Unit)
Lumen/CLK MAT # 1459078

116A Board
(1) PER CABINET

150 Cooper Rd. (F-15)
W. Berlin, NJ 08091


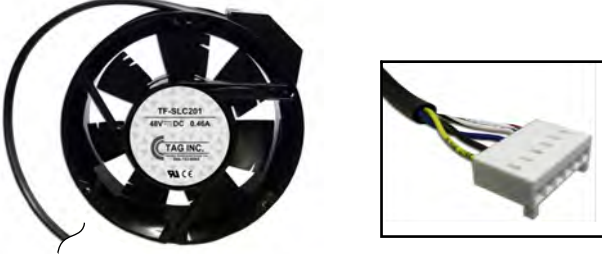
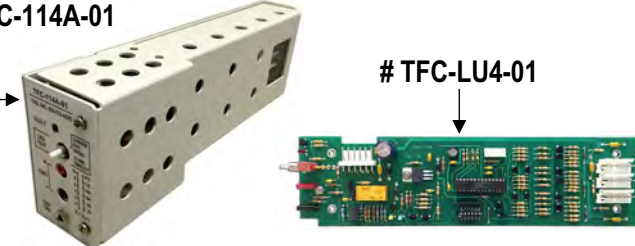
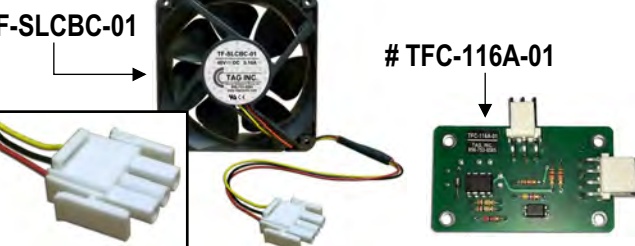
www.tagcords.com
Telecom Assistance Group

Telephone: (856) 753-8585
Fax : (856) 768-7645

80 Type/SLC 2000 Cabinet Solutions for Lumen/CenturyLink

New Heat Exchanger, Fan & Alarm Control Replacements

Ordering Information:

TF-SLC201-02 MAT # 1337731	48V Heat Exchanger for 80 Type Cabinet w/ Screw on Connector <i>(Equiv. to KS23912L4)</i> <i>(80 Type Cabinet - External)</i>	
TF-SLC201 MAT # 1336047	48V Fan for SLC 2000 4A / 4B Fan Trays w/ 5 Wire Plug <i>(Equiv. to KS23912L6)</i> <i>(80 Type Cabinet, SLC 2000 Tray - Internal)</i> <i>(Replacement Power Cables for Lucent 4A/4B Fan Trays are available, order # TFCS-LU4APA-06 - call for pricing)</i>	
TFC-114A-01 MAT # 1355243	114A Fan Control Unit Replacement for 80 Type Cabinet Heat Exchangers <i>(Equiv. to 106894934)</i> <i>(includes metal housing w/ alarm control board)</i>	
TFC-LU4-01 MAT # 1355244	Alarm Control Board Replacement for Lucent 4A/4B, 4G/SLC 2000 Fan Trays & 114A Control Units <i>(control board only - customer supplied fan trays / 114A housing)</i>	
TF-SLCBC-01 MAT # 1461343	48V Cooling Fan for 80 Type Cabinet Battery Compartment w/ 3 Wire Plug	
TFC-116A-01 MAT # 1459078	Alarm Control Board for Lucent 116A Battery Fan Unit <i>(control board only - customer supplied metal housing)</i>	

150 Cooper Rd. (F-15)
W. Berlin, NJ 08091

www.tagcords.com

Telecom Assistance Group

Telephone: (856) 753-8585

Fax : (856) 768-7645

OSP Cabinet Replacement Fans



(TOP VIEW)



"Lucent 2A"

PN # TF-LU2A

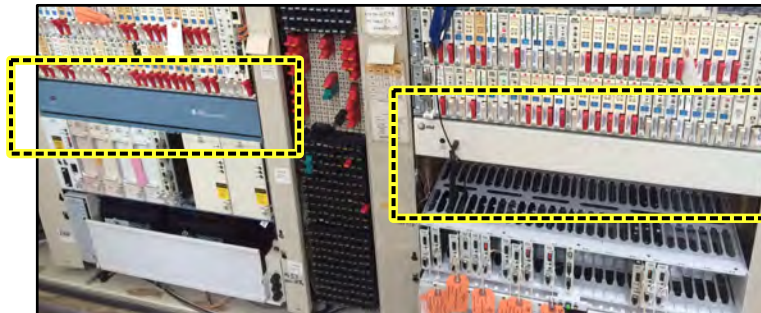
48 Volt Replacement Fan for
Lucent 2A Fan Tray

w/ 3 Leads & Faston Connectors

(fan only, use with existing guard grills)

(Equiv. to KS22501L5)

LUCENT 2A FAN TRAY
HAS (3) FANS (INSIDE VIEW)
(fan tray is not included)



*** **NEW - ERT Fan Tray Repairs** ***
order # **TFR-LU2A-01**
FAN TRAY REPAIR, Lucent 2A Fan Unit

THERE ARE TWO TYPES
of 2A FAN TRAYS (BLUE / TAN)
(INSIDE VIEW of 80A/D CABINET)

Ordering Information:

TF-LU2A

48 Volt Replacement Fan for Lucent 2A Fan Tray
w/ 3 Leads & Faston Connectors
(fan only, use with existing guard grills) (Equiv. to KS22501L5)

Lumen/CLK MAT #

1336048

150 Cooper Rd. (F-15)
W. Berlin, NJ 08091

www.tagcords.com

Telephone: (856) 753-8585

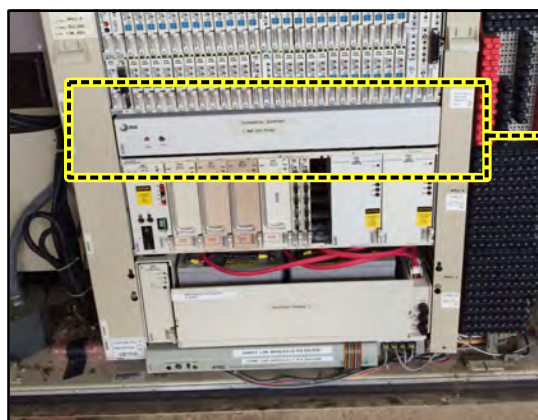
Fax : (856) 768-7645

Telecom Assistance Group

OSP Cabinet Replacement Fans & Alarm Control Boards



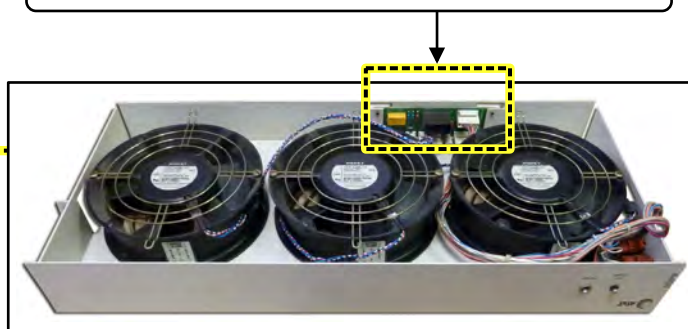
INSIDE VIEW OF 80A/D CABINET



"Lucent 2B / 2C"

PN # TF-LU2B
48 Volt Replacement Fan for
Lucent 2B Fan Tray
w/ 3 Wire Plug
(Equiv. to KS22501L5A)

NEW Alarm Control Boards are also available,
order # **TFC-LU2BC-01**, MAT # **1458909**



LUCENT 2B FAN TRAY
w/ (3) EXISTING FANS (BOTTOM VIEW)
(fan tray is not included)

Ordering Information:

		<u>Lumen/CLK MAT #</u>
TF-LU2B	48V Fan for Lucent <u>2B</u> Fan Tray w/ 3 Wire Plug <i>(Equiv. to KS22501L5A)</i>	1336049
TF-LU2C	48V Fan for Lucent <u>2C</u> Fan Tray w/ 3 Wire Plug <i>(Equiv. to KS22501L5A) - (not shown)</i>	1336060
TFC-LU2BC-01	Alarm Control Board for Lucent <u>2B</u> & <u>2C</u> Fan Trays <i>(customer supplied fan trays)</i>	1458909
TFCS-2BPWRY-01	Power Cable "Y" for Lucent <u>2B</u> & <u>2C</u> Fan Trays <i>w/ 1 Male Connector to Female "Y", (1') - (not shown)</i>	
TFCS-2BRS-08	Remote Sensing Daisy Chain Cable for Lucent <u>2B</u> & <u>2C</u> Fan Trays <i>w/ 2 Wires & Connectors, (8') - (not shown)</i>	

150 Cooper Rd. (F-15)
W. Berlin, NJ 08091

www.tagcords.com

Telephone: (856) 753-8585
Fax : (856) 768-7645

Telecom Assistance Group

OSP Cabinet Replacement Fans & Alarm Control Boards

"Reltec / Mclean APW"

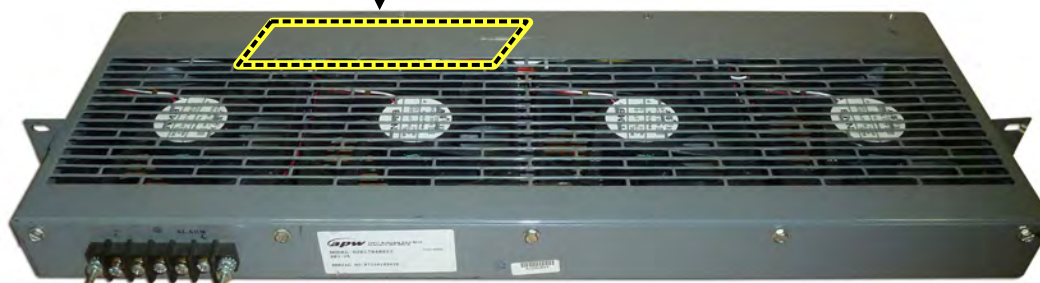
PN # TF-SLCAPW-01

- (1) Individual 48V Fan for **SLC 2000 Cabinet - Reltec / Mclean APW Tray**
w/ 3 Wire Open End
(includes (3) butt splices)

NEW Alarm Control Boards are also available,
order # **TFC-SLCAPW-4**, MAT # **1459111**



(use in existing tray
UJB17H48S22)



RELTEC / MCLEAN APW FAN TRAY # UJB17H48S22 w/ EXISTING FANS
(FAN TRAY IS NOT INCLUDED)

Ordering Information:

Lumen/CLK MAT #

TF-SLCAPW-01 (1 fan)	(1) Individual 48V Fan for SLC 2000 Cabinet - Reltec / Mclean APW Tray, w/ 3 Wire Open End & (3) butt splices (use in existing tray # UJB17H48S22)	1358927
TF-SLCAPW-04 (4 fans)	(4) Individual 48V Fans for SLC 2000 Cabinet - Reltec / Mclean APW Tray, w/ 3 Wire Open End & (12) butt splices (use in existing tray # UJB17H48S22)	1358928
TFC-SLCAPW-4	Alarm Control Board Replacement for Reltec / Mclean Fan Trays (customer supplied fan tray)	1459111

150 Cooper Rd. (F-15)
W. Berlin, NJ 08091

www.tagcords.com

Telephone: (856) 753-8585
Fax : (856) 768-7645

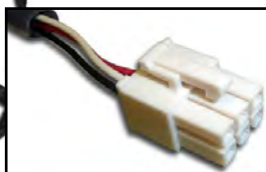
Telecom Assistance Group

OSP Cabinet Replacement Fans



"6D/F"

Lumen/CLK MAT #
1355242



PN # TF-COM6DF-01

48V Fan for **CommScope Cabinet**,
6D/F Bay, HECI VAUCADY(XXX)
w/ Internal Thermal Sensor &
3 Wire, 6 Pin Connector (4' cable)

(Commonly used w/ existing 6 pin to 4 pin adapter cable in fan tray)



"6D/F"

Lumen/CLK MAT #
1466315



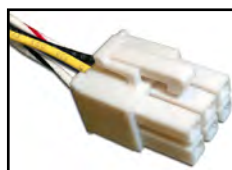
PN # TF-COM6DF-04

48V Fan for **CommScope Cabinet**,
6D/F Bay, HECI VAUCADY(XXX)
w/ Internal Thermal Sensor &
w/ 3 Wire, 4 Pin Connector (4' cable)

(Commonly used w/ existing 4 pin adapter cable in fan tray)



"ALP"
(HX Door)



PN # TF-COM6DF-02

48V Fan for **CommScope Cabinet**, ALP HX Door
w/ 5 Wire, 6 Pin Connector (4' cable)

(Commonly used w/ existing 100k thermistor extension cable)



"6B/C" (HX Door)

Lumen/CLK MAT #
1439621



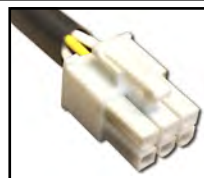
PN # TF-COM6BC-01

48V Fan for **CommScope Cabinet**,
6B/C Battery / ALP HX Door
w/ 3 Wire, 4 Pin Connector (4' cable)



"52 or 82" (HX Door)

Lumen/CLK MAT #
1465437



PN # TF-COM6DF-02R

48V Fan for **CommScope 52/82 Cabinet**, HX Door
w/ 5 Wire, 6 Pin Connector (4' cable)

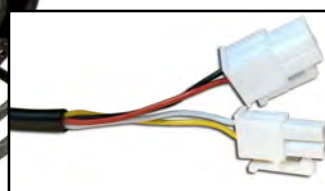
(includes 10k thermistor extension cable, # **TFCS-COM6TR** -
(equiv. to 860 540 530), 5 Wire 6 Pin to 3 Wire 4 Pin)

100k thermistor cables (860 427 335) are also available, # **TFCS-COM6TA-01**



"52E" (Battery)

Lumen/CLK MAT #
1466728



PN # TF-COM52E-01

48V Fan for
CommScope 52E Cabinet, Battery
w/ (1) 2 Wire, 4 Pin Conn. & (1) 2 Wire, 2 Pin Conn. (4' cable)

150 Cooper Rd. (F-15)
W. Berlin, NJ 08091

www.tagcords.com

Telephone: (856) 753-8585
Fax : (856) 768-7645

Telecom Assistance Group

OSP Cabinet Replacement Salt Air Door Fan Tray

"CommScope ALP 448/248"

PN # TFT-COM48B-01

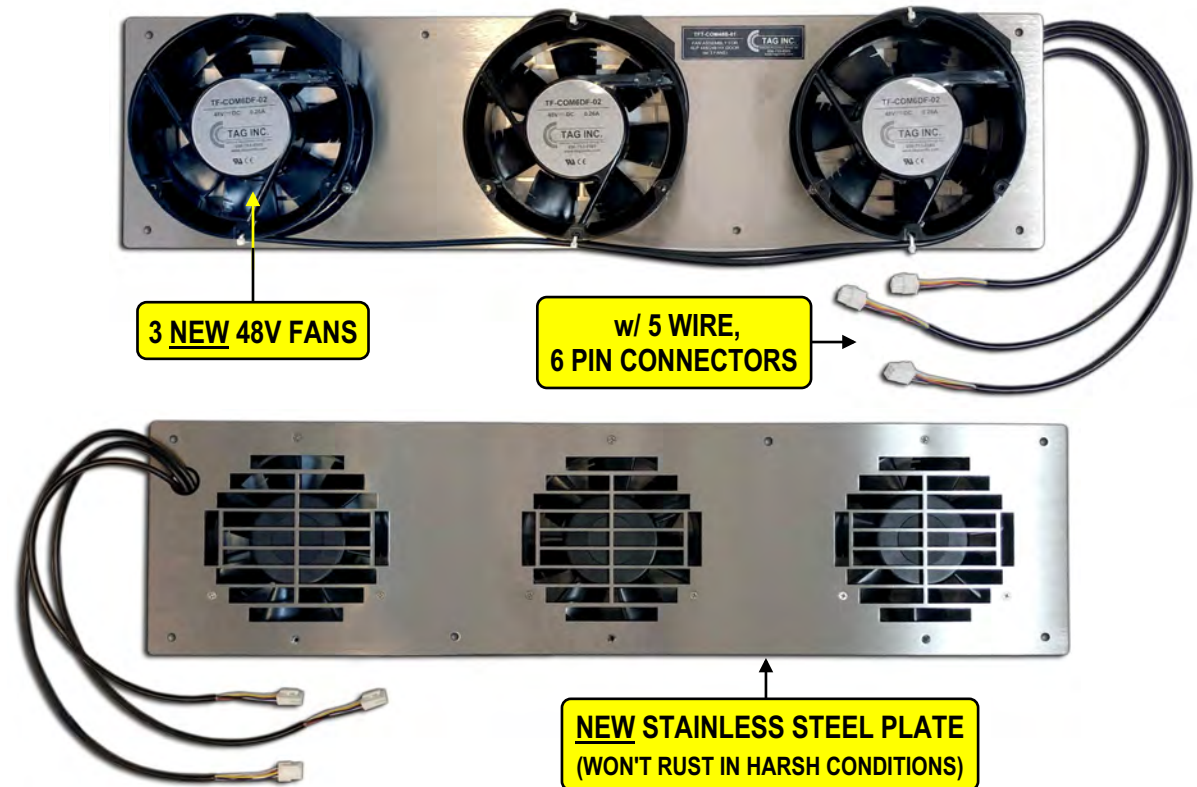
3 Fan Stainless Steel Assembly for
CommScope ALP 448/248 HX Door Fans

(Replacement for HX FAN ASSY:
CMMI860481399)



COMMScope ALP 448/248 CABINET

Replace RUSTY Fan Assemblies Caused by SALT AIR



Ordering Information:

TFT-COM48B-01

3 Fan Stainless Steel Assembly for CommScope ALP 448/248 HX Door Fans
includes: (3) NEW 48V FANS (# TF-COM6DF-02B, w/ 5 Wire, 6 Pin Connectors) & Grommet

Call for Pricing

TFT-COM48B-02

Stainless Steel Plate for CommScope ALP 448/248 HX Door Fans (plate only)

150 Cooper Rd. (F-15)
W. Berlin, NJ 08091

www.tagcords.com
Telecom Assistance Group

Telephone: (856) 753-8585
Fax : (856) 768-7645

OSP Cabinet Replacement Heat Exchangers / Fans

"Fujitsu 6200"



Lumen/CLK MAT # 1359018

PN # TF-FUJ6200-01

48V Replacement Heat Exchanger for
Fujitsu 6200 Cabinet

w/ 5 Wire Plug

**FUJITSU 6200 CABINET
HAS (2) HEAT EXCHANGERS
(LEFT & RIGHT SIDES)**



PN # TF-FUJ6200-02

48V Replacement Fan for **Lorain / Marconi
M.P.S. 428212000 Fan Shelf**
found in **Fujitsu 6200 Cabinets**

w/ Power Prongs



PN # TF-FUJ6200-03

48V Replacement Fan for
Fujitsu 6200 Cabinet Tray

*w/ 3 Wire Open End
& Power Prongs*

150 Cooper Rd. (F-15)
W. Berlin, NJ 08091

www.tagcords.com

Telephone: (856) 753-8585

Fax : (856) 768-7645

Telecom Assistance Group

OSP Cabinet Replacement Fans & Alarm Control Boards

"UMC1000 (6-Fan Tray)"

(120mm)



Lumen/CLK MAT #
1466657

PN # TF-UMC1000-01
48V Fan (120mm) for
Tellabs UMC1000 Fan Tray
w/ 3 Wire Plug

(use in AFC Tray # 0310-1716 or 8650-0414)

NEW Alarm Control Boards
are also available,
order # **TFC-UMC1000-06**

"UMC1000 (10-Fan Tray)"

(80mm)

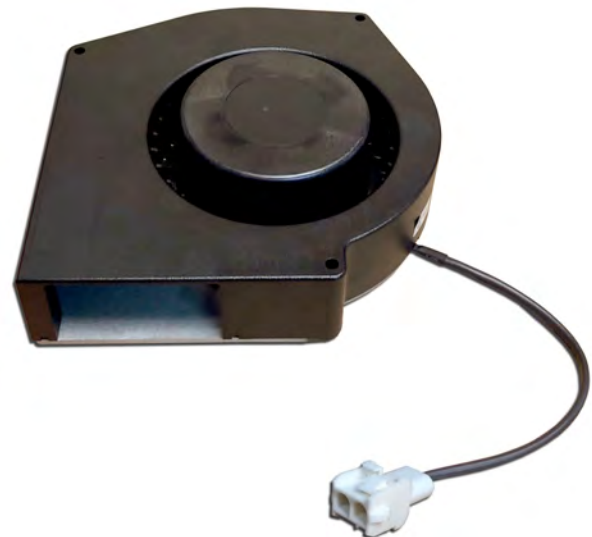


Lumen/CLK MAT #
1466656

PN # TF-UMC1000-02
48V Fan (80mm) for
Tellabs UMC1000 Fan Tray
w/ 3 Wire Plug

(use in AFC Fan Tray F10 # 0310-1716)

"UMC672 Cabinet"

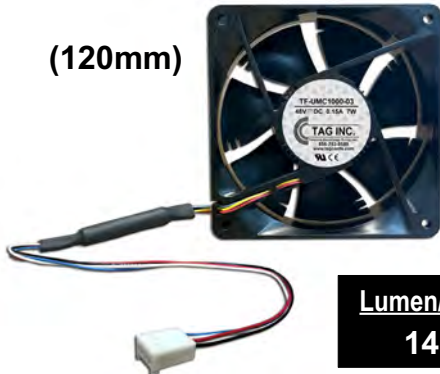


PN # TF-UMC672-01
48V Fan for
Tellabs UMC672 Cabinet
w/ 2 Wire Plug

(fan only, use with existing metal housing)

"UMC1000 (8-Fan Tray)"

(120mm)



Lumen/CLK MAT #
1466761

PN # TF-UMC1000-03
48V Fan (120mm) for
Tellabs UMC1000 Fan Tray
w/ 4 Wire Plug

(use in Tellabs Tray # 4125013, 4195091, 4515090)

150 Cooper Rd. (F-15)
W. Berlin, NJ 08091

www.tagcords.com

Telephone: (856) 753-8585
Fax : (856) 768-7645

Telecom Assistance Group

OSP Cabinet Replacement Fans

"NEC C-REX"

PN # TF-CREX-01

48 Volt Replacement Fan for
NEC C-REX Cabinet Fan Tray
(Round Fan) w/ 4 Wire Plug



ZHONE / NEC ISC-303 FAN TRAY
(w/ 2 EXISTING FANS) (fan tray is not included)

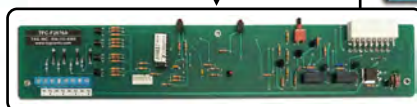


Lumen/CLK MAT #
1355199



Lumen/CLK MAT #
1355240

NEW F2876A
Alarm Control Boards
are also available,
order # **TFC-F2876A**,
MAT # 1479394



PN # TF-CREX-02
48 Volt Replacement Fan for
NEC C-REX Cabinet Fan Shelf
(Square Fan) w/ 2 Wire Open End



NEC F2876A FAN SHELF
(w/ 4 EXISTING FANS) (fan shelf is not included)

PN # TF-CREX-03
48 Volt Replacement Fan for
NEC C-REX Cabinet ECU Fan Tray Unit
(Square Fan) w/ 3 Wire Open End



NEC Y4899A/74884A ECU
(w/ 4 EXISTING FANS) (ECU fan unit is not included)



Lumen/CLK MAT #
1461017

150 Cooper Rd. (F-15)
W. Berlin, NJ 08091

www.tagcords.com

Telephone: (856) 753-8585
Fax : (856) 768-7645

Telecom Assistance Group

OSP Fans & Heat Exchangers

"DISC*S CPU"

PN # TF-DISCSCPU-01

48V Cooling Fan for
DISC*S CPU

w/ 2 Wire Open End
(includes screws,
(2) butt splices & (1) cable tie)

*(fan only, use with
existing plug, guard grills & bracket)*

**Lumen/CLK MAT #
1479944**

**(EXISTING PLUG,
USE THE PROVIDED BUTT SPLICES)**

TF-DISCSCPU-01
(fan only) →



**(NEW FAN SHOWN INSTALLED
ON EXISTING BRACKET)**



**48V
(120mm)**

"Telamon / Ciena 5150"

PN # TF-CN5150HX-01

48V Heat Exchanger for
**Telamon / Ciena 5150
EMUX Cabinet Door**

w/ 4 Wires &
Sealed Connector

"AISCOUT"

PN # TF-AI-SCT-01

48V (80mm) Fan for
AISCOUT

w/ 3 Wire Right Angle Plug



**48V
(80mm)**

150 Cooper Rd. (F-15)
W. Berlin, NJ 08091

www.tagcords.com

Telephone: (856) 753-8585
Fax : (856) 768-7645

Telecom Assistance Group

OSP Cabinet Replacement Fans

"ES660C Rectifier, 24V (60mm)"

24VDC
(60mm x 25mm)



PN # TF-ES660-01
24V (60mm x 25mm) Fan for
Lucent ES660C Rectifier Unit
w/ 2 Wire Plug

"Argus Rectifier, 12V (80mm)"

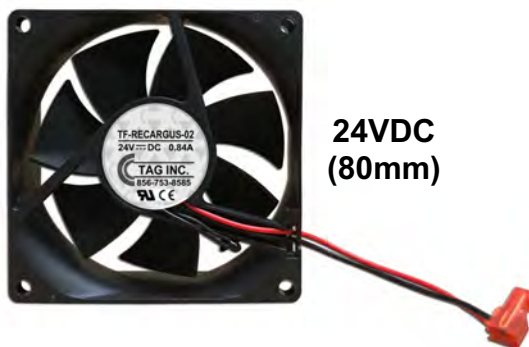
12VDC
(80mm)



PN # TF-RECARGUS-01
12V (80mm) Fan for
Argus Rectifier Cabinet
w/ 2 Wire Plug

"Argus Rectifier, 24V (80mm)"

24VDC
(80mm)



PN # TF-RECARGUS-02
24V (80mm) Fan for
Argus Rectifier Cabinet
w/ 2 Wire Right Angle Plug

Lumen/CLK MAT # 1474133

PN # TF-RECARGUS-03
24V (80mm) Fan for
Argus Rectifier Cabinet
w/ 2 Wire Right Angle Plug
& Threaded Inserts

"Argus Rectifier, 12V (120mm)"

12VDC
(120mm)



PN # TF-RECARGUS-04
12V (120mm) Fan for
Argus Rectifier Cabinet
w/ 2 Wire Open End
(includes (2) butt splices)

150 Cooper Rd. (F-15)
W. Berlin, NJ 08091

www.tagcords.com

Telephone: (856) 753-8585
Fax : (856) 768-7645

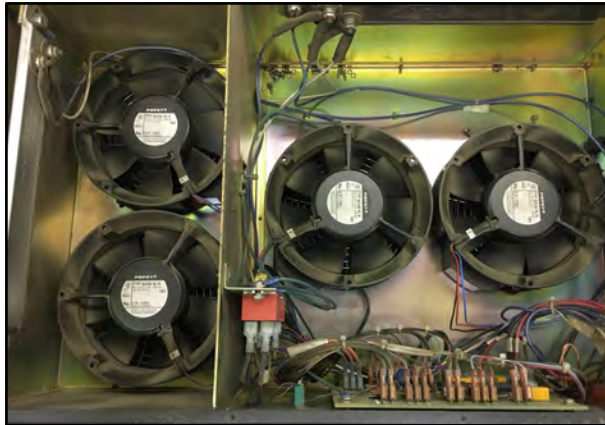
Telecom Assistance Group

OSP Cabinet Replacement Fans

"Stromberg Carlson DCO RLS"

PN # TF-DCORLS-01
48 Volt Replacement Fan for
Stromberg Carlson DCO RLS
Cabinet Fan Trays

*w/ 3 Leads, Faston Connectors
& Power Prongs*



Lumen/CLK MAT #
1481914

← **TOP VIEW OF DCO RLS
CABINET FAN TRAY**
*(tray has (4) fans)
(fan tray is not included)*



SEISCOR / PULSECOM "D" CABINET →
(INSIDE VIEW OF FAN MOUNTED IN THE CEILING)

*Fans are also available for the
Seiscor / Pulsecom "B" Cabinet
(order PN # TF-SPB-AC01)*



"Seiscor / Pulsecom D"

PN # TF-SPD-AC01
110VAC Replacement Fan for
Seiscor / Pulsecom "D" Cabinet

w/ Power Prongs & Guard Grill

*(includes power wire,
(3) butt splices & hardware)*

150 Cooper Rd. (F-15)
W. Berlin, NJ 08091

www.tagcords.com

Telephone: (856) 753-8585
Fax : (856) 768-7645

Telecom Assistance Group

OSP Cabinet Replacement Fans

"SLC96 (36 Type) Cabinet"

PN # TFT-SLC96-AC01
110VAC Replacement Fan
w/ Bracket Assembly for
SLC96 (36 Type) Cabinet

(Equiv. to Fan Assembly KS22099L5)

(1) 110VAC Replacement Fan *

** fans can also be ordered
separately (without mounting),
see ordering information below*

&

(1) Mounting Bracket



**FAN ASSEMBLY
IS FOUND INSIDE
36 TYPE CABINETS**



Ordering Information:

Lumen/CLK MAT #

TFT-SLC96-AC01 **110VAC Fan w/ Bracket Assembly for**
SLC96 (36 Type) Cabinet *(Equiv. to Fan Assembly KS22099L5)*

1356198

TFT-SLC96-AC01L **110VAC (Low Temp) Fan w/ Bracket Assembly for**
SLC96 (36 Type) Cabinet *(Equiv. to Fan Assembly KS22099L5)*

TF-SLC96-AC02 **110VAC Fan (fan only) for SLC96 (36 Type) Cabinet**
(fan only) *(includes power wire, (3) butt splices & hardware)*
(use in Fan Assembly KS22099L5)

1356199

150 Cooper Rd. (F-15)
W. Berlin, NJ 08091

www.tagcords.com

Telephone: (856) 753-8585
Fax : (856) 768-7645

Telecom Assistance Group

OSP Cabinet Replacement Fans & Alarm Control Boards

"Litespan PDFA"



Lumen/CLK MAT #
1341519

PN # TF-LS2000-01

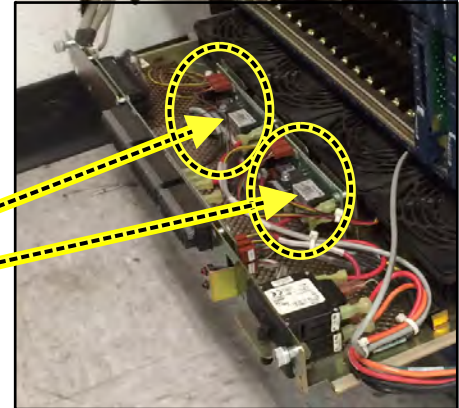
48 Volt Replacement Fan for
Litespan 2000 Power Distribution (PDFA)
w/ 3 Wire Plug & Guard Grill (includes plastic rivets)

USE IN FAN TRAY # 500-1126-723
(fan tray is not included)

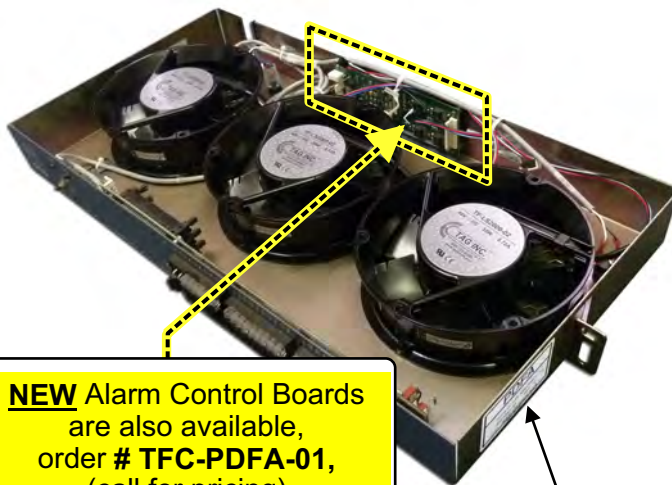
NEW Alarm Control Boards
are also available,
order # **TFC-PDFA-X2**,
(call for pricing)



(2 ALARM CONTROL BOARDS
ARE USED IN EACH TRAY)



PN # TF-LS2000-02
48 Volt Replacement Fan for
Litespan 2000 High Velocity PDFA
w/ 3 Wire Connector
(includes plastic rivets)



NEW Alarm Control Boards
are also available,
order # **TFC-PDFA-01**,
(call for pricing)



"Litespan High Velocity PDFA"



Lumen/CLK MAT #
1356400

HIGH VELOCITY PDFA FAN ASSEMBLY,
FAN TRAY # 509-0000-086 / 509-0000-163
(fan tray is not included)

150 Cooper Rd. (F-15)
W. Berlin, NJ 08091

www.tagcords.com

Telephone: (856) 753-8585
Fax : (856) 768-7645

Telecom Assistance Group

OSP Cabinet Replacement Fans & Alarm Control Boards

"LS2000 Heat Exchangers"



Lumen/CLK MAT #
1359389



PN # TF-LS2KSB-01
48V Heat Exchanger for
Litespan 2000
Cabinet Heat Stack

w/ Power Prongs

Lumen/CLK MAT #
1496549

PN # TF-LS2000-03
48V Heat Exchanger for
Litespan 2000 Cabinet Heat Stack

w/ 3 Unterminated Leads -
Red (+48 Return), Black (-48V), Blue (Sensor)
Includes (3) Butt Splices

LS2000 CABINET (OUTSIDE VIEW)



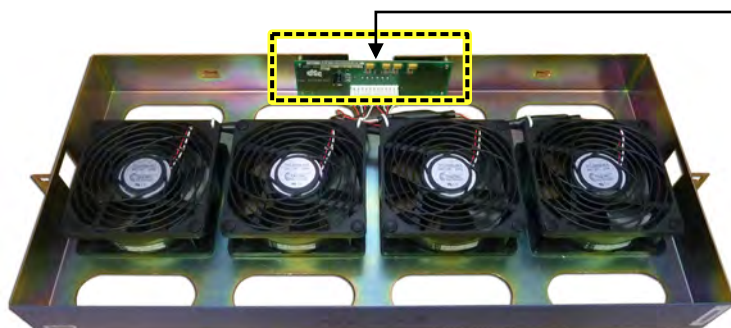
"DFA Fans & Alarm Control Boards"

PN # TF-LS2000-44
Litespan 2000 DFA Fan Kit

Lumen/CLK MAT #
1445489

Kit includes:

- (4) NEW 48V Fans w/ Guard Grills
- includes (16) plastic rivets & (4) zip ties
- (1) NEW Wiring Harness w/ 12 Wire Plug



KIT SHOWN INSTALLED IN EXISTING DFA FAN TRAY *
****(DFA FAN TRAY IS NOT INCLUDED)***

NEW Alarm Control Boards
are also available, order
TFC-DFA-01, MAT # 1458948



use in existing DFA,
DC Fan Assembly 500-1100-XXX

Individual fans (for splicing) can also be ordered,
for a qty of (1) fan, order # TF-LS2000-04
(Lumen/CLK MAT # 1445620)

150 Cooper Rd. (F-15)
W. Berlin, NJ 08091

www.tagcords.com

Telephone: (856) 753-8585
Fax : (856) 768-7645

Telecom Assistance Group

OSP Cabinet Heat Exchanger Fans

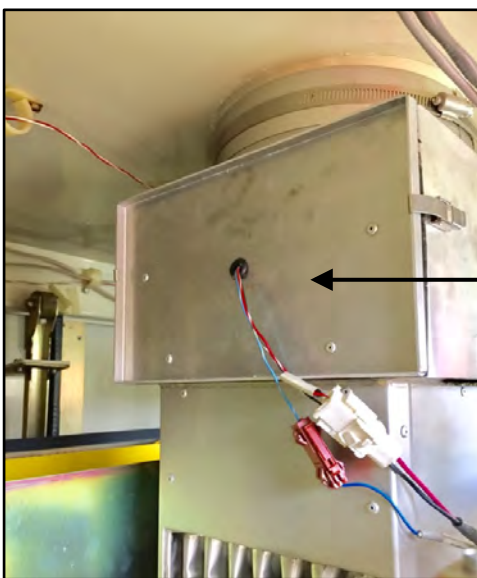
"LS2000 / 2030 - Tarzan"

PN # TF-ACABTZ-01A
48V Heat Exchanger (Tarzan) for
Litespan 2000 (LSC-2030)
Cabinet Heat Stack

Lumen/CLK MAT #
1359388



Includes: (1) Adapter Cable (# TFCS-ACABTZX)
& (3) Butt Splices



w/ (1) - 2 Wire Amp Connector
(Power, red / black wires)
&
(1) - 1 Wire Amp Connector
(Alarm, blue wire)

DSC LITESPAN 2000
LSC-2030 CABINET
(INSIDE VIEW OF HEAT STACK)

"LS2000 / 2030 - Lower"

PN # TF-ACABLHX-01
48V Heat Exchanger (Lower) for
Litespan 2000 (LSC-2030) Cabinet

w/ (1) - 2 Wire Amp Connector
(Power, red (+) / black (-) wires)
&
(1) - 1 Wire Amp Connector
(Sensor, blue wire)

Lumen/CLK MAT #
1460436



150 Cooper Rd. (F-15)
W. Berlin, NJ 08091

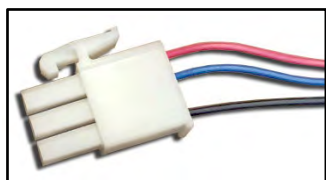
www.tagcords.com

Telephone: (856) 753-8585
Fax : (856) 768-7645

Telecom Assistance Group

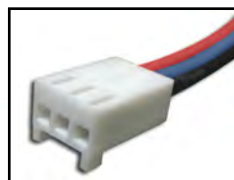
OSP Cabinet Replacement Fans

"A25B50 Rectifier"



PN # TF-LRA25B50-01
24 Volt Replacement Fan for
A25B50 Rectifier Unit
(Lorain / Marconi)
w/ 3 Wire Plug

"Current Limiter"



PN # TF-MESACL-01
48 Volt Replacement Fan for
Marconi Current Limiter
w/ 3 Wire Plug

"Power Conversion Module"



PN # TF-LPCM-01
24 Volt Replacement Fan (80mm) for
Lorain Power Conversion Module
w/ 3 Wire Male Plug
(fan only - use in existing
Lorain V15F50/P Power Conversion Module)

"Power Module"



POWER PRONGS
PLUG WIRES: YELLOW (+) BROWN (-)

PN # TF-LPM-01
48 Volt Replacement Fan for
Lorain Power Module
w/ Power Prongs
(fan only - use in existing
Lorain 427215900 Power Modules)

150 Cooper Rd. (F-15)
W. Berlin, NJ 08091

www.tagcords.com

Telephone: (856) 753-8585
Fax : (856) 768-7645

Telecom Assistance Group

OSP Cabinet Heat Exchanger Fans

"Marconi Mesa (Top) - Tarzan"

PN # TF-MCABTZ-01

48 Volt Replacement Heat Exchanger for
Marconi Mesa "Top" HX Cabinet
(Tarzan)

w/ 3 Wire Plug
Includes (3) Butt Splices

Lumen/CLK MAT #
1359387



PN # TFCS-MATP-06
Mesa Alarm Test Plug Kit

*(used to troubleshoot fans
at the Mesa 6 ECU)*



(Pack of 6)

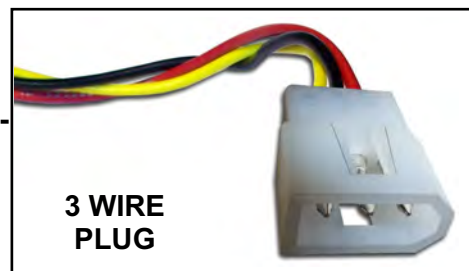
"Marconi Mesa (Bottom)"

PN # TF-MESA6-01

48 Volt Replacement Heat Exchanger for
Marconi Mesa "Bottom" HX Cabinet

w/ 3 Wire Plug

Lumen/CLK MAT #
1359091



**3 WIRE
PLUG**

150 Cooper Rd. (F-15)
W. Berlin, NJ 08091

www.tagcords.com

Telephone: (856) 753-8585

Fax : (856) 768-7645

Telecom Assistance Group

OSP Cabinet Replacement Fans & Alarm Control Boards



Lumen/CLK MAT # 1479565

PN # TFC-FA400-01
Alarm Control Board
 Replacement for
 Marconi Mesa Master Tray

"Marconi Mesa Fan Tray - Master"

PN # TF-FA400-01
 48V Replacement Fan
 for **Marconi Mesa Master Fan Tray**
 w/ 3 Wire Plug

*(use in EBM -
 LP98638, Master Tray
 # FA-400-175-001)*
(fan tray is not included)



**Lumen/CLK MAT #
 1439622**

"Marconi Mesa Fan Tray - Slave"

PN # TF-FA400-02
 48V Replacement Fan
 for **Marconi Mesa Slave Fan Tray**
 w/ 3 Wire Plug

*(use in EBM / Papst -
 # FA-400-175-002)*
(fan tray is not included)



**Lumen/CLK MAT #
 1439623**



150 Cooper Rd. (F-15)
 W. Berlin, NJ 08091

www.tagcords.com

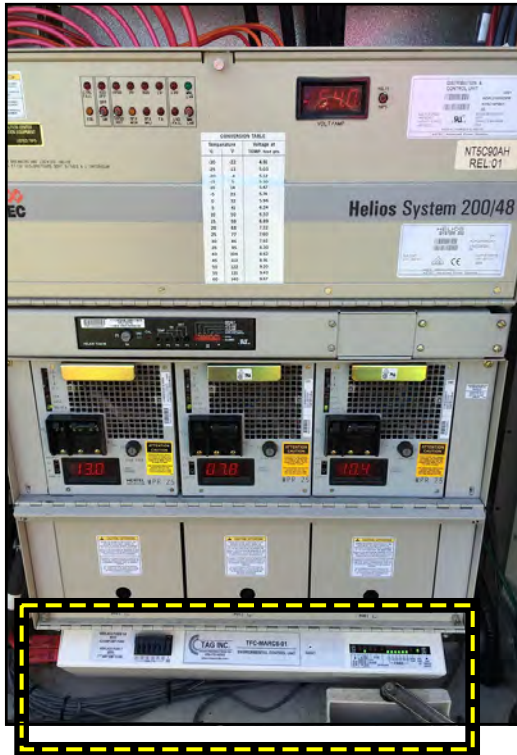
Telephone: (856) 753-8585
 Fax : (856) 768-7645

Telecom Assistance Group

6 Position Environmental Control Unit (ECU) Replacement for Marconi Cabinet

TFC-MARC6-01

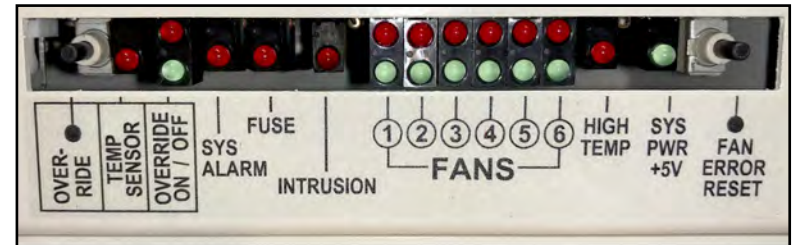
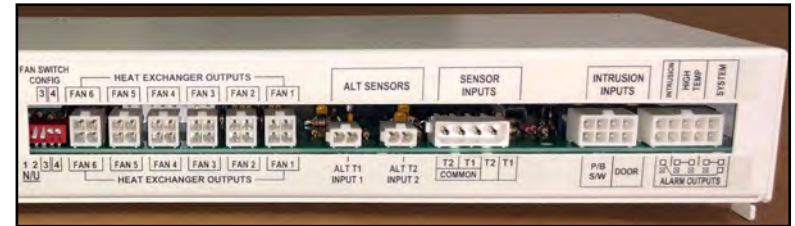
MARCONI CABINET w/ ECU



- Drop-In Replacement for Remote Cabinet (Sites)
- Variable Speed Control 2, 4 or 6 HX Fans
- Battery Life Conservation
- Heat Exchanger Fan Life Conservation
- Reduces Energy Costs
- Plug & Play (no programming)
- Alarms for Fans, Fuses, High Temps & Intrusion

PN # TFC-MARC6-01
6 Position ECU
Environmental Control Unit
for Marconi Cabinet
(supports 6 HX fans)

(BACK VIEW)



(FRONT VIEW)



Ordering Information:

TFC-MARC6-01

6 Position Environmental Control Unit (ECU) for Marconi Cabinet
(supports 6 HX fans)

Includes: (2) # TFCS-MESA30-12, Temperature Sensors

Lumen/CLK MAT #

1461075

150 Cooper Rd. (F-15)
 W. Berlin, NJ 08091

www.tagcords.com
Telecom Assistance Group

Telephone: (856) 753-8585
 Fax : (856) 768-7645

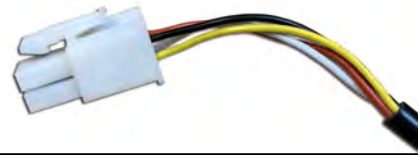
OSP Cabinet Heat Exchangers & Environmental Control Unit (ECU)

"Mesa DSLAM 384 Cabinet"



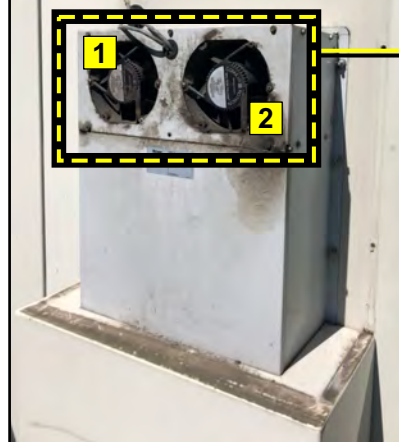
PN # TF-MESA384-01
48V (External) Heat Exchanger for
Mesa DSLAM 384 Cabinet
 w/ 4 Wire Round
 Female Weatherproof Plug

*(Internal Fans are also available,
 order # TF-MESA384-02
 (see ordering information below))*



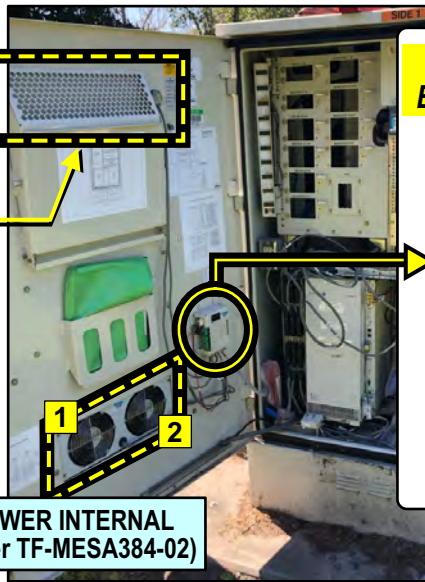
(OUTSIDE - HEAT EXCHANGERS)

TOP EXTERNAL
(order TF-MESA384-01)

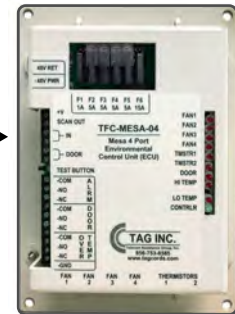


LOWER INTERNAL
(order TF-MESA384-02)

(INSIDE - HEAT EXCHANGERS & ECU)



Need a Replacement
ECU for this Cabinet ?



PN # TFC-MESA-04

Ordering Information:

TF-MESA384-01	48V Heat Exchanger for Mesa DSLAM 384 Cabinet w/ 4 Wire (Round) Female Weatherproof Plug <i>Top External Fans</i>	Call for Pricing
TF-MESA384-02	48V Heat Exchanger for Mesa DSLAM 384 Cabinet w/ 4 Wire (Square) Female Plug, (8' cable) <i>Lower Internal Fans</i>	
TFC-MESA-04	4 Port Environmental Control Unit (ECU) Replacement (used in Mesa 2 - DSLAM 192 & DSLAM 384 Type Cabinets)	

150 Cooper Rd. (F-15)
 W. Berlin, NJ 08091

www.tagcords.com

Telephone: (856) 753-8585
 Fax : (856) 768-7645

Telecom Assistance Group

Fan Environmental Control Unit (ECU) Replacement for Remote Cabinet Sites

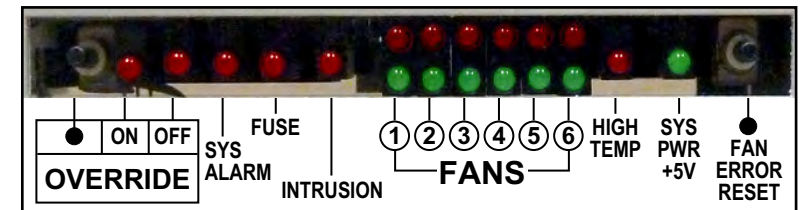
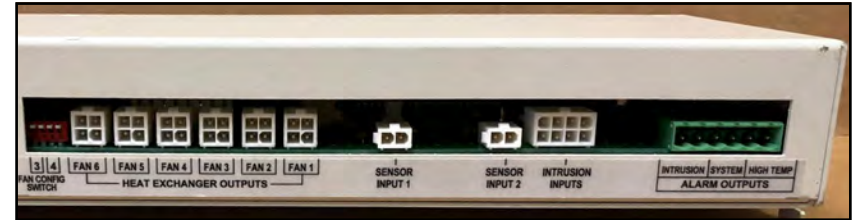
TFC-MESA246-01

REMOTE CABINET w/ ECU



- Drop-In Replacement for Remote Cabinet (Sites)
- Variable Speed Control 2, 4 or 6 Fans
- Battery Life Conservation
- Heat Exchanger Fan Life Conservation
- Reduces Energy Costs
- Plug & Play (no programming)
- Alarms for Fans, Fuses, High Temps & Intrusion

PN # TFC-MESA246-01
Fan Environmental Control Unit
(ECU) Replacement
for Remote Cabinet Sites

(BACK VIEW)

(FRONT VIEW)


Ordering Information:

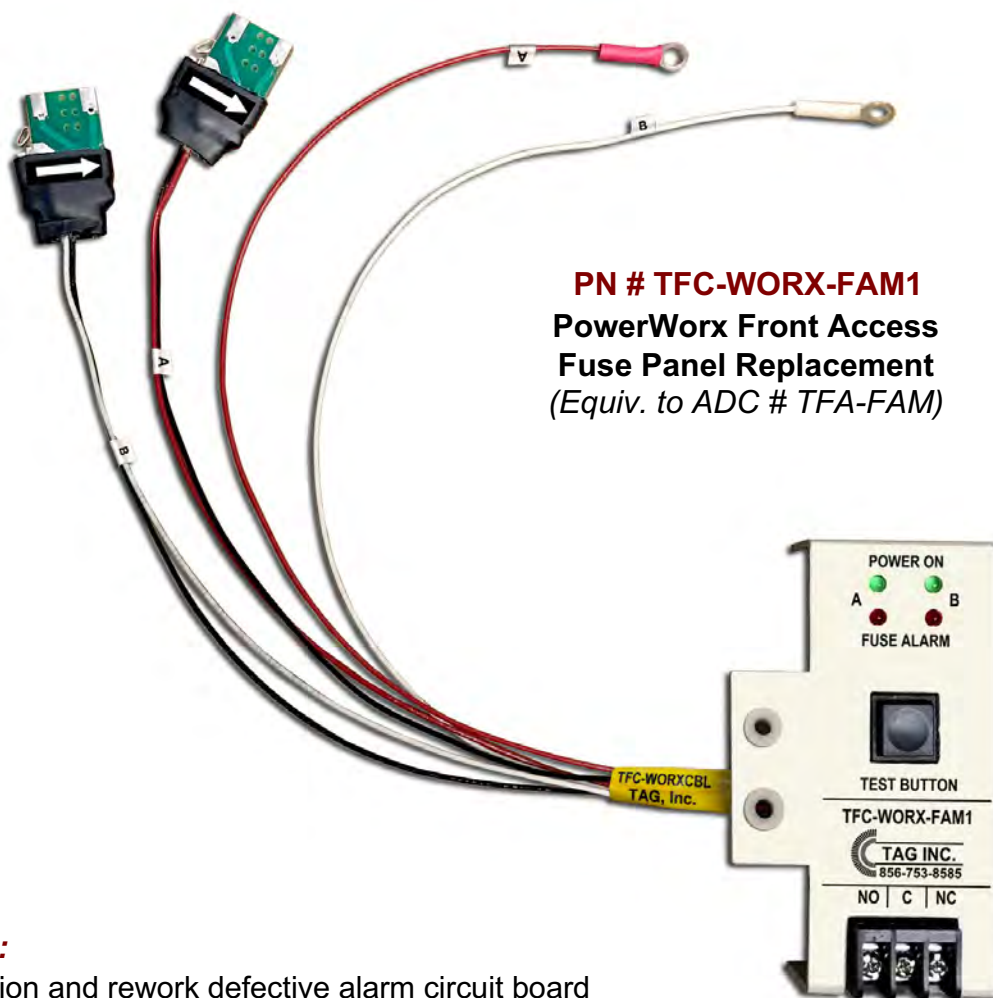
TFC-MESA246-01
Fan Environmental Control Unit (ECU) for Remote Cabinet Sites
Includes: (2) # TFCS-MESA30-12, Temperature Sensors
TFCS-MESA246-08
Extension Cable for Mesa Fan Controllers found in Mesa, 52, 192 & 384 type cabinets (4 Wire Cable w/ 4 Pin Connectors (8'))
TFCS-M225TP
Extension Cable for Mesa 246 ECU to Upper Cabinet Fan, 20' - (not shown)
Lumen/CLK MAT #
1461124
1475550

150 Cooper Rd. (F-15)
W. Berlin, NJ 08091

www.tagcords.com
Telecom Assistance Group

Telephone: (856) 753-8585
Fax: (856) 768-7645

PowerWorx Front Access Fuse Panel Replacement



PN # TFC-WORX-FAM1
PowerWorx Front Access
Fuse Panel Replacement
(Equiv. to ADC # TFA-FAM)

Used for:

Identification and rework defective alarm circuit board
 in the PowerWorx Fuse Panel (PWX-002FGCSD10PWDP)

Issue:

Defective Alarm Circuit Board in the PowerWorx Fuse Panel incorrectly sets remote power alarm. Alarm contact closure has a dead short across normally open and common contacts indicating power distribution or power bus trouble. This problem only affects the ability to monitor local or remote alarms in the ADC PowerWorx distribution panel.

Ordering Information:

TFC-WORX-FAM1	PowerWorx Front Access Fuse Panel <i>(Equiv. to ADC # TFA-FAM)</i> <i>(used in Remote Cabinet Sites)</i>	Call for Pricing
----------------------	---	-------------------------

150 Cooper Rd. (F-15)
 W. Berlin, NJ 08091

www.tagcords.com

Telephone: (856) 753-8585
 Fax : (856) 768-7645

Telecom Assistance Group

OSP Cabinet Replacement Fan Trays

TAG UNIVERSAL 19" / 23" CABINET FAN TRAY

Mounting Brackets
can be installed to
fit 19" or 23" bays



NEW FAN TRAY
w/ Thermostat,
LEDs & Test Button

3 NEW 48V FANS

INSIDE VIEW OF CABINET



PN # TFT-NXWDL-02

TAG Universal 19" / 23"
"Harsh Environment" Cabinet Fan Tray

Includes:

- (1) **NEW** Fan Tray
w/ Thermostat, LEDs & Test Button
- (3) **NEW** 48V Fans

Lumen/CLK MAT #
1472248

Ordering Information:

Lumen/CLK MAT

TFT-NXWDL-02 (NEW tray & fans)	TAG Universal 19/23 "Harsh Environment" Cabinet Fan Tray (includes NEW Fan Tray w/ Thermostat, LEDs & Test Button & (3) NEW 48V Fans)	1472248
TFT-NXTLEV-03MC (NEW tray & fans)	TAG Fan Tray for Next Level Cabinet (includes NEW Fan Tray & (3) NEW 48V, 3 Wire Fans) (Equiv. to # 039167, T03MC)	1444040
TF-NXTLEV-03 (fans only)	48V Fan Assembly for Next Level Cabinet Fan Trays (includes (3) 3 Wire Fans w/ R/A Connectors) (use in existing tray: # 039167, T03MC)	1358901
TFT-NXWDL-01 (NEW tray & fans)	TAG Universal 19/23 Cabinet Fan Tray (includes NEW Fan Tray w/ Thermostat, LEDs & Test Button & (3) NEW 48V Fans)	1451023

150 Cooper Rd. (F-15)
W. Berlin, NJ 08091

www.tagcords.com

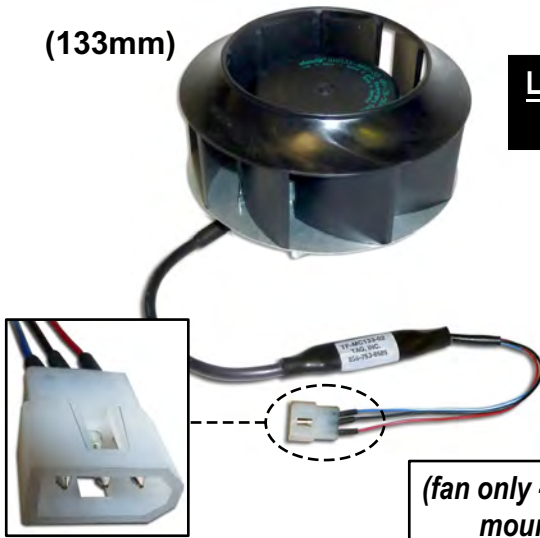
Telecom Assistance Group

Telephone: (856) 753-8585
Fax : (856) 768-7645

OSP Cabinet Heat Exchanger Fans

"Mesa 768 Cabinet"

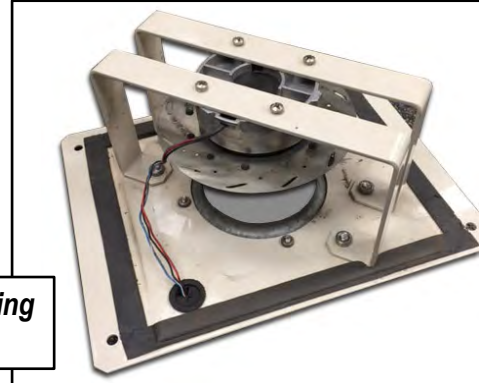
(133mm)



Lumen/CLK MAT #
1355448

PN # TF-MC133-02

(133mm) Heat Exchanger for
Mesa 768 Cabinets
w/ 3 Pin Plug



*(fan only - use with existing
mounting bracket)*



(133mm)

**3 PIN MALE
BULKHEAD PLUG**

Lumen/CLK MAT #
1482855

"Mesa Sport Cabinet"

PN # TF-MC133-05

(133mm) Heat Exchanger for
Mesa Sport Cabinets
w/ 3 Pin Male Bulkhead Plug

*(fan only - use with existing
mounting bracket)*

"Mesa Sport Cabinet"

PN # TF-CSHX133-01

(133mm) Heat Exchanger for
Cell Site Mesa Sport Cabinets
w/ 4 Pin Male Weatherproof Plug

*(fan only - use with existing
mounting bracket)*

(133mm)



**4 PIN MALE
WEATHERPROOF PLUG**

150 Cooper Rd. (F-15)
W. Berlin, NJ 08091

www.tagcords.com

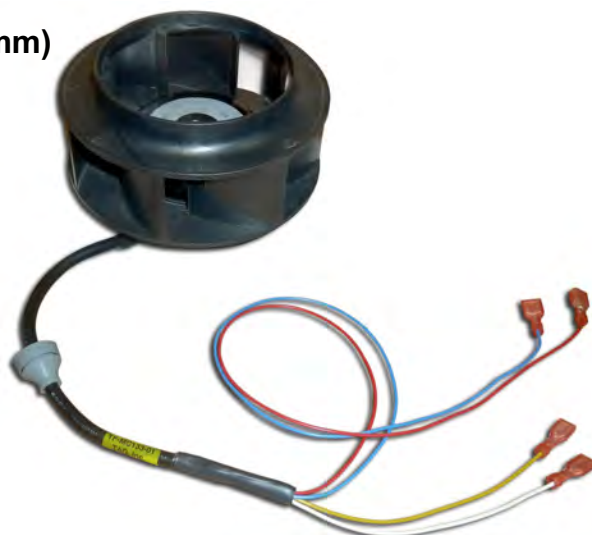
Telephone: (856) 753-8585
Fax : (856) 768-7645

Telecom Assistance Group

OSP Cabinet Heat Exchanger Fans

" Purcell FlexAir 741 Cabinet "

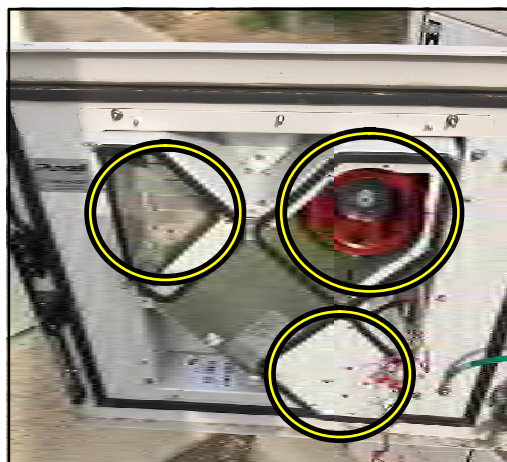
(133mm)



Lumen/CLK MAT #
1358926

*fan only -
use with existing bracket*

PN # TF-MC133-01
(133mm) Heat Exchanger
for Purcell FlexAir 741 Cabinet (Door)
w/ 4 Leads & Faston Connectors



**VIEW OF FLEXAIR 741 CABINET w/
DOOR OPEN & FAN COVER PLATE REMOVED**

PN # TF-MC175-04
(175mm) Heat Exchanger
for Purcell A009 Cabinet
w/ Weatherproof Connector



*fan only,
use with existing bracket -
(for Fan Kit with Bracket,
order # TF-MC175-04-KIT)*

" Purcell A009 Cabinet "

(175mm)



**VIEW OF A009 CABINET w/
FAN COVER PLATE REMOVED**

150 Cooper Rd. (F-15)
W. Berlin, NJ 08091

www.tagcords.com

Telephone: (856) 753-8585
Fax : (856) 768-7645

Telecom Assistance Group

OSP Cabinet Heat Exchanger Fans

"SRA-200 Cabinet"

PN # TF-SRA200-01
(175mm) Heat Exchanger for
SRA-200 Cabinet
 w/ 3 Wire Plug

*(fan only,
 use with existing mounting bracket)*

(175mm)



Lumen/CLK MAT #
1492655

Lumen/CLK MAT #
1358925

(175mm)



"Mesa 4 NXT Cabinet"

PN # TF-MC175-02
(175mm) Heat Exchanger for
Mesa 4 NXT Cell Site Cabinet
 w/ 3 Wire Plug

*(fan only,
 use with existing fan assembly)*

*(Common Fan Replacement for
 Siemens ICN Assembly: 087-23500-10)*

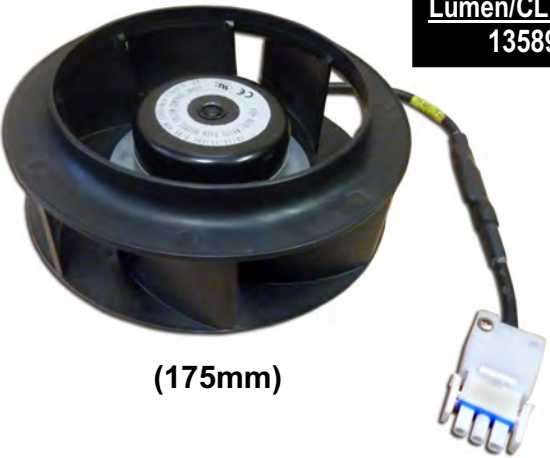
Lumen/CLK MAT #
1358924

"OSP Cabinet"

PN # TF-MC175-03
(175mm) Heat Exchanger for
OSP Cabinet
 w/ 3 Wire Plug

*(fan only,
 use with existing fan assembly)*

(175mm)



150 Cooper Rd. (F-15)
 W. Berlin, NJ 08091

www.tagcords.com

Telephone: (856) 753-8585
 Fax : (856) 768-7645

Telecom Assistance Group

OSP Cabinet Replacement Heat Exchangers / Fans

"Siemens 914EX Metro MXU"

(175mm)

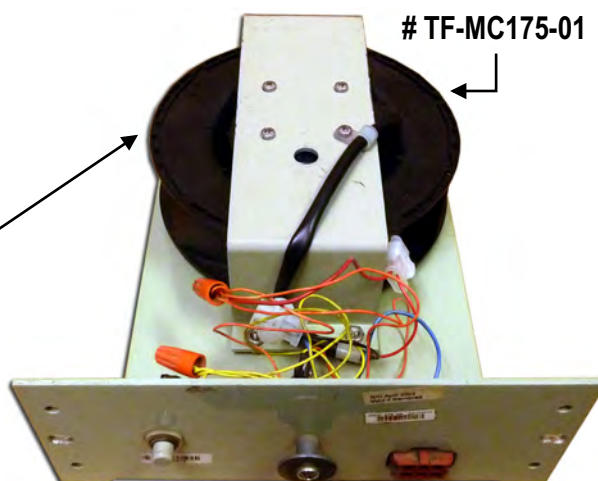


Lumen/CLK MAT #
1467133

NEW FAN
SHOWN INSTALLED ON
EXISTING ASSEMBLY BRACKET
(assembly bracket is not included)

PN # TF-MC175-01
(175mm) Heat Exchanger for
Siemens 914EX Metro MXU Cabinet

w/ 2 Wire Open End &
(2) butt splices / hardware



"Siemens 914E RT "

PN # TF-914EHX-01
48V Heat Exchanger for
Siemens 914E RT Cabinet

w/ Power Prongs



Lumen/CLK MAT #
1359017

"Siemens 914EX Metro MXU"

PN # TF-914EXMET-01
48V Replacement Fan for
Siemens 914EX Metro MXU Tray

w/ Power Prongs

150 Cooper Rd. (F-15)
W. Berlin, NJ 08091

www.tagcords.com

Telephone: (856) 753-8585
Fax : (856) 768-7645

Telecom Assistance Group

OSP Cabinet Heat Exchangers & Fans



12V
(120mm)

Lumen/CLK MAT #
1444322

ADTRAN OPTI 6100, EFANM →
FAN TRAY # 1184508L2
(4 FANS)
(fan tray is not included)

"Adtran Opti 6100"

PN # TF-OPTI-01
12V Fan for
Adtran Opti 6100 Fan Trays
w/ 3 Wire Plug



"Adtran TA5000 - Low Profile"

PN # TF-TA5KH-02
48V "Low Profile" Heat Exchanger for
Adtran TA5000 Cabinet Door
w/ 4 Wire Plug



Lumen/CLK MAT #
1501884

(fan only, use with existing guard grill)

← **ADTRAN TA5000 CABINET DOOR**
(6 HEAT EXCHANGERS)

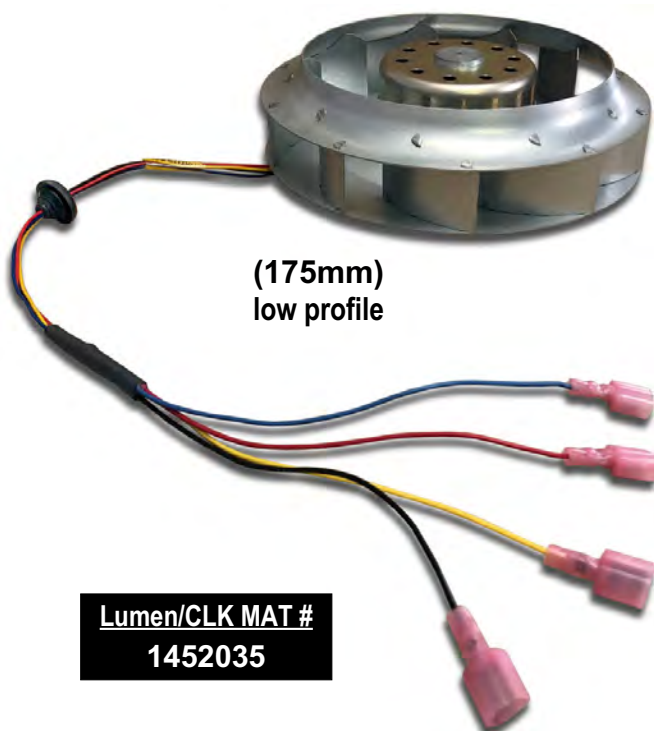
150 Cooper Rd. (F-15)
W. Berlin, NJ 08091

www.tagcords.com

Telephone: (856) 753-8585
Fax : (856) 768-7645

Telecom Assistance Group

OSP Cabinet Heat Exchanger Fans



(175mm)
low profile

Lumen/CLK MAT #
1452035

(2) HEAT EXCHANGERS MOUNTED IN EACH DOOR
(4) FANS TOTAL

"ODC Cabinet Door HX"

PN # TF-HX175LP-01
(175mm) "Low Profile"

Heat Exchanger for
Calix ODC Cabinet Door

*w/ Grommet, 4 Leads
& Faston Connectors*



CALIX ODC CABINET (DOOR)

"ODC 1000 Cabinet HX"

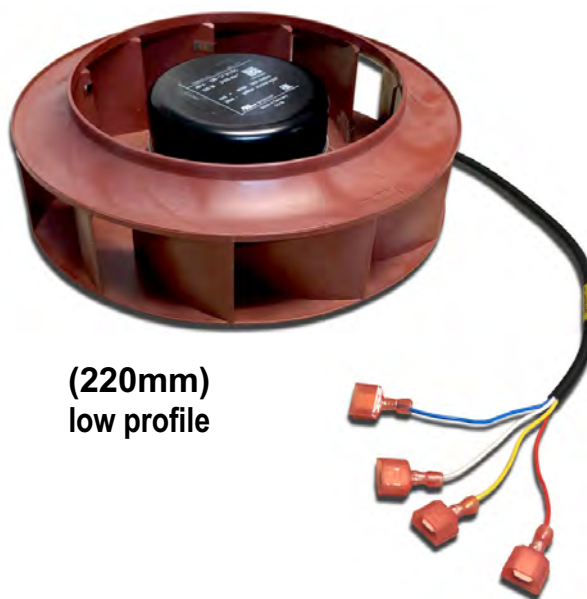
PN # TF-HX220LP-01
(220mm) "Low Profile"

Heat Exchanger for
Calix ODC 1000 Cabinet

w/ 4 Leads & Faston Connectors

*(fan only,
use with existing mounting bracket)*

Lumen/CLK MAT #
1477798



(220mm)
low profile

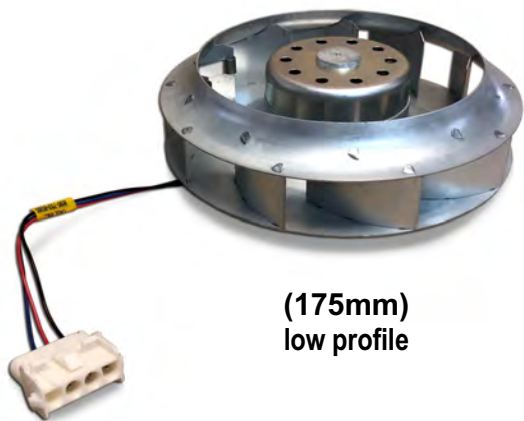
150 Cooper Rd. (F-15)
W. Berlin, NJ 08091

www.tagcords.com

Telephone: (856) 753-8585
Fax : (856) 768-7645

Telecom Assistance Group

OSP Cabinet Heat Exchanger Fans



(175mm)
low profile

"OPM 640 Cabinet (Retro Fit) HX"

PN # TF-OPM640HX
(175mm) "Low Profile" Heat Exchanger
OPM 640 Cabinet (Retro Fit Roof)

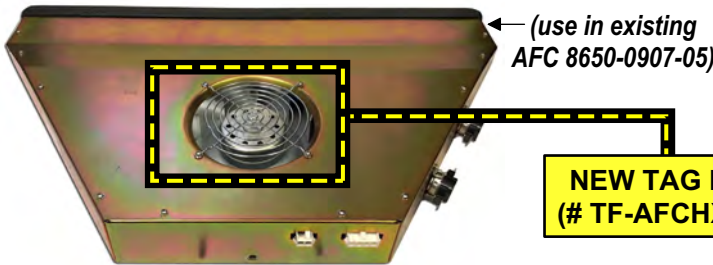
w/ 3 Wire, 4 Pin Plug

Lumen/CLK MAT #
1492516

"OPM Cabinet HX"

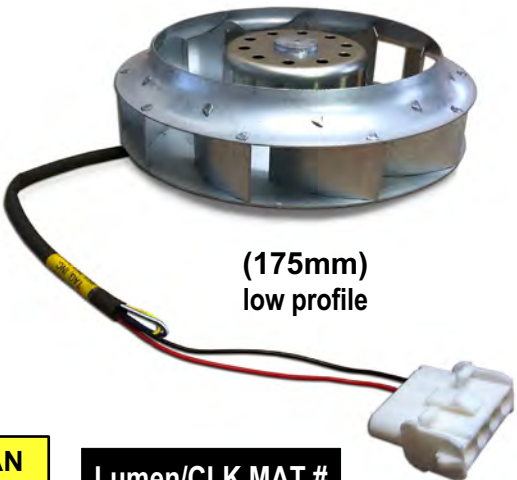
PN # TF-AFCHX-01
(175mm) "Low Profile" Heat Exchanger
for AFC Roof Fan Unit in OPM Cabinets

w/ 2 Wire, 4 Pin Plug



(use in existing
AFC 8650-0907-05)

NEW TAG FAN
(# TF-AFCHX-01)



(175mm)
low profile

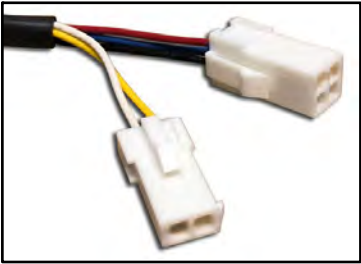
Lumen/CLK MAT #
1475725

"Catena Cabinet HX"

PN # TF-CATNHX-01
(175mm) "Low Profile" Heat Exchanger for
Catena Cabinet



(175mm)
low profile



w/ (1) 2 Wire Plug &
(1) 3 Wire, 4 Pin Plug

150 Cooper Rd. (F-15)
W. Berlin, NJ 08091

www.tagcords.com

Telephone: (856) 753-8585
Fax : (856) 768-7645

Telecom Assistance Group

OSP Cabinet Replacement Heat Exchangers / Fans

"Mesa Bridge Cabinet"

PN # TF-MC179-01A

Heat Exchanger Replacement for
Mesa Bridge Cabinet (Upper - Internal)
w/ 4 Wire Female Weatherproof Plug

Lumen/CLK MAT # 1490468

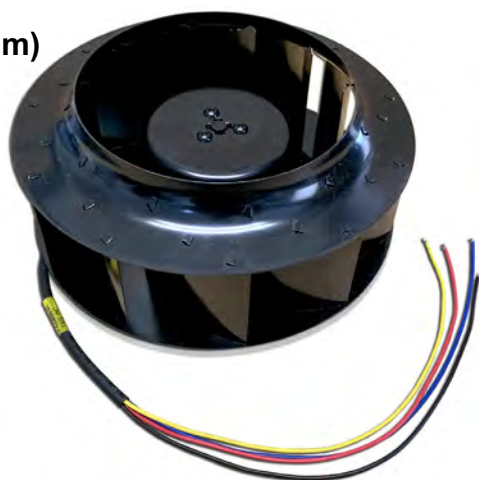
PN # TF-MC179-01

Heat Exchanger Replacement for
Mesa Bridge Cabinet (Lower - Door)
w/ 4 Wire Female Weatherproof Plug



(ECUs are also available
for Mesa Bridge Cabinets,
order # **TFC-MESA-01**)

(250mm)

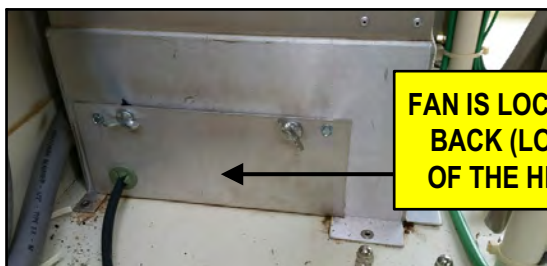


"Ice Qube Cabinet"

PN # TF-CQ250-01
(250mm) Heat Exchanger
Replacement for
Ice Qube Cabinet
w/ 4 Wire Open End

PN # TF-AFC672-01
48 Volt Replacement Fan for
AFC Cabinet Heat Stack
w/ Power Prongs

Lumen/CLK MAT #
1456851



**FAN IS LOCATED IN THE
BACK (LOWER) SIDE
OF THE HEAT STACK**

"AFC Cabinet"



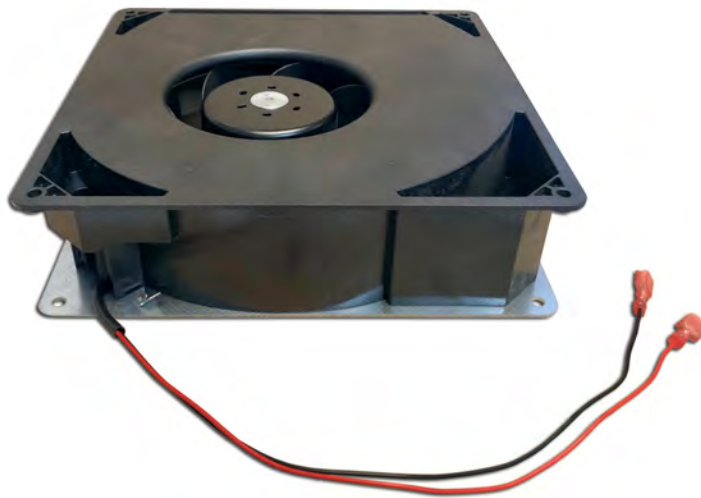
150 Cooper Rd. (F-15)
W. Berlin, NJ 08091

www.tagcords.com

Telephone: (856) 753-8585
Fax : (856) 768-7645

Telecom Assistance Group

OSP Cabinet Heat Exchanger Fans & Alarm Control Boards



"Calix ODC Stack"

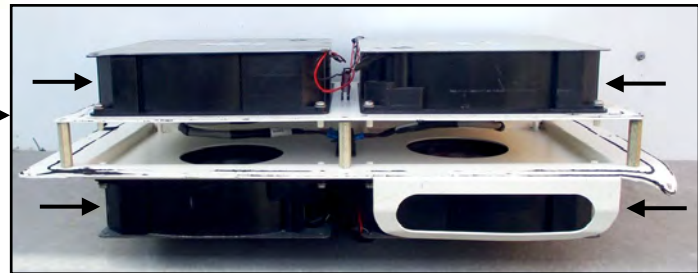
PN # TF-CLXODC-01F
48V Heat Exchanger for
Calix ODC Stack

*w/ 2 Wires &
Faston Connectors*

**Lumen/CLK MAT #
1456478**

CALIX ODC HEAT EXCHANGER UNIT (4 HX)

*(heat exchanger unit
is not included)*



"Calix ODC-2000"

PN # TFC-CALIX2KHX
Alarm Control Board for
Calix ODC-2000 Cabinet HX Controller

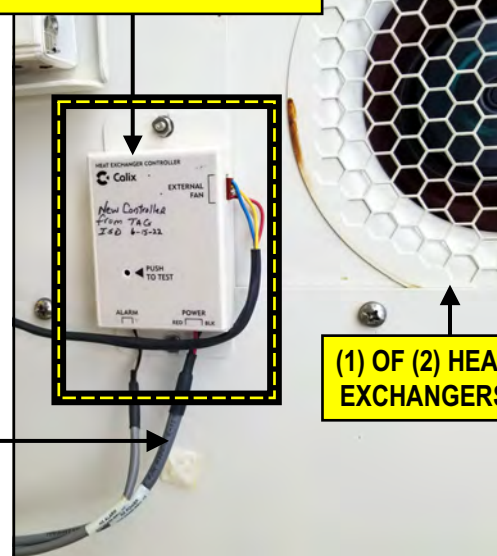
Lumen/CLK MAT # 1481590



(control board only, use in existing housing)

NEW HX Power Cables are also available,
order # TFCSC-CLX2KHX, MAT # 1490190

CONTROL BOARD MOUNTED IN EXISTING HOUSING



**(1) OF (2) HEAT
EXCHANGERS**

CALIX ODC-2000 CABINET (INSIDE VIEW)

150 Cooper Rd. (F-15)
W. Berlin, NJ 08091

www.tagcords.com

Telephone: (856) 753-8585
Fax : (856) 768-7645

Telecom Assistance Group

OSP Cabinet Heat Exchanger Fans

"Calix ODC - 225mm"

PN # TF-CLX225-02

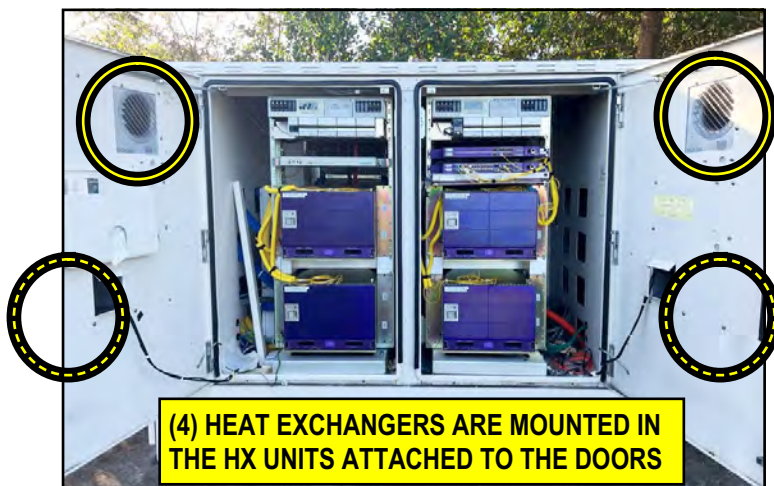
(225mm) HX Impeller Fan (**Upper**) for
Calix ODC Cabinet
w/ 4 Wire Female Snap on Plug, (30" cable)

PN # TF-CLX225-03

(225mm) HX Impeller Fan (**Lower**) for
Calix ODC Cabinet
w/ 4 Wire Male Snap on Plug, (30" cable)



(fan only,
mounting bracket
is not included)



Lumen/CLK MAT #
1492772 (TF-CLX225-02)
1492619 (TF-CLX225-03)

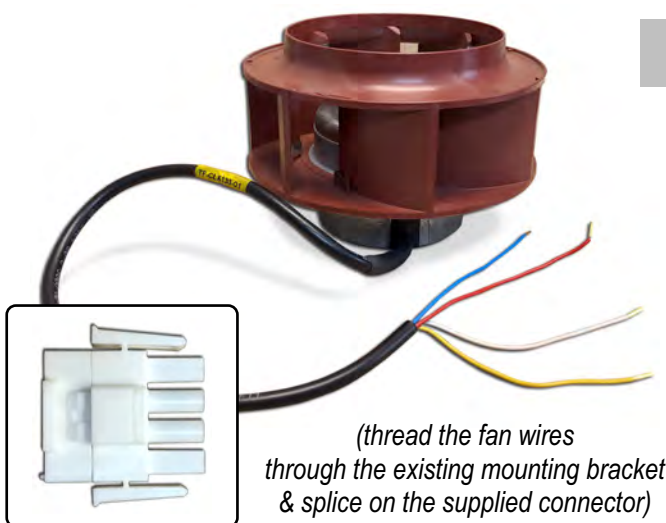
"Calix ODC - 133mm"

PN # TF-CLX133-01

(133mm) Heat Exchanger for
Calix ODC Cabinet
w/ 4 Wire Open End*

*(includes (4) butt splices
& (1) 4 pin connector)

(fan only, mounting bracket is not included)



(thread the fan wires
through the existing mounting bracket
& splice on the supplied connector)

Lumen/CLK MAT #
1490163

150 Cooper Rd. (F-15)
W. Berlin, NJ 08091

www.tagcords.com

Telephone: (856) 753-8585
Fax : (856) 768-7645

Telecom Assistance Group

OSP Cabinet Heat Exchanger Fans

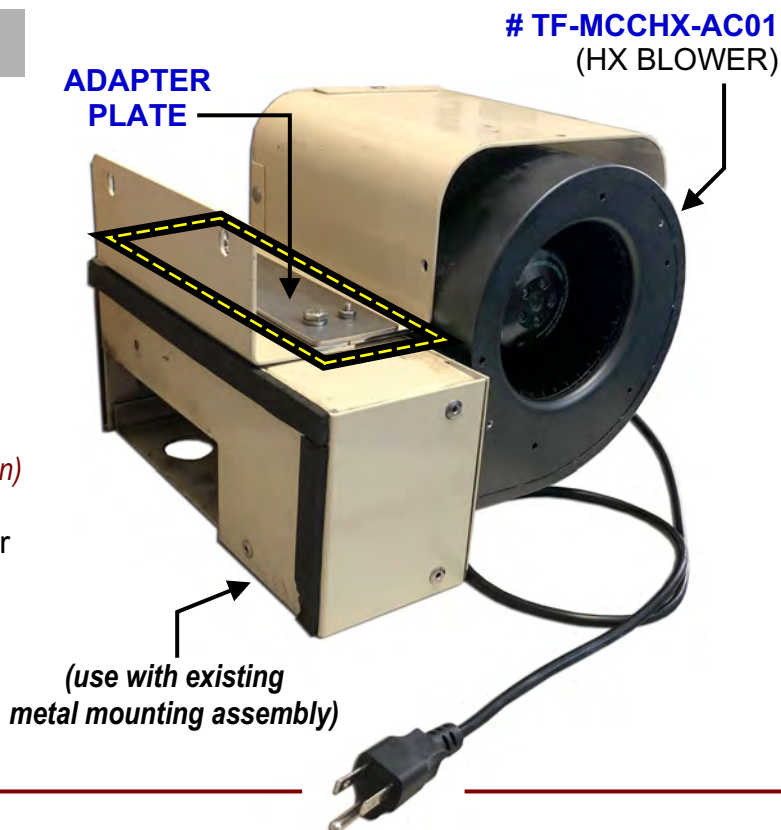
"Reltec / McLean"

PN # TF-MCCHX-AC01
110 VAC Replacement
Heat Exchanger Blower
Reltec / McLean Cabinet
w/ 3 Prong Power Plug
& Adapter Plate

Lumen/CLK MAT # 1481410

PN # TF-MCCHX-AC0R *(not shown)*
110 VAC Replacement
(**RIGHT**) Heat Exchanger Blower
Reltec / McLean Cabinet
w/ 3 Prong Power Plug
& Adapter Plate

Lumen/CLK MAT # 1493505



"McLean ClimaGuard"



(175mm or 225mm)

PN # TF-TX38HX-01
(225mm) Heat Exchanger for
McLean ClimaGuard Cabinet Cooler
w/ 4 Wire Weatherproof Connector
(use in TX38-5684-001
Cabinet Cooler)

Lumen/CLK MAT # 1473110

PN # TF-TX33HX-01 *(not shown)*
(175mm) Heat Exchanger for
McLean ClimaGuard Cabinet Cooler
w/ 4 Wire Weatherproof Connector
(use in TX33-2848-104
Cabinet Cooler)

Lumen/CLK MAT # 1473428

150 Cooper Rd. (F-15)
W. Berlin, NJ 08091

www.tagcords.com

Telephone: (856) 753-8585
Fax : (856) 768-7645

Telecom Assistance Group

OSP Cabinet Heat Exchanger Fans

"Noren Cooling Unit"

Lumen/CLK MAT #
1359090

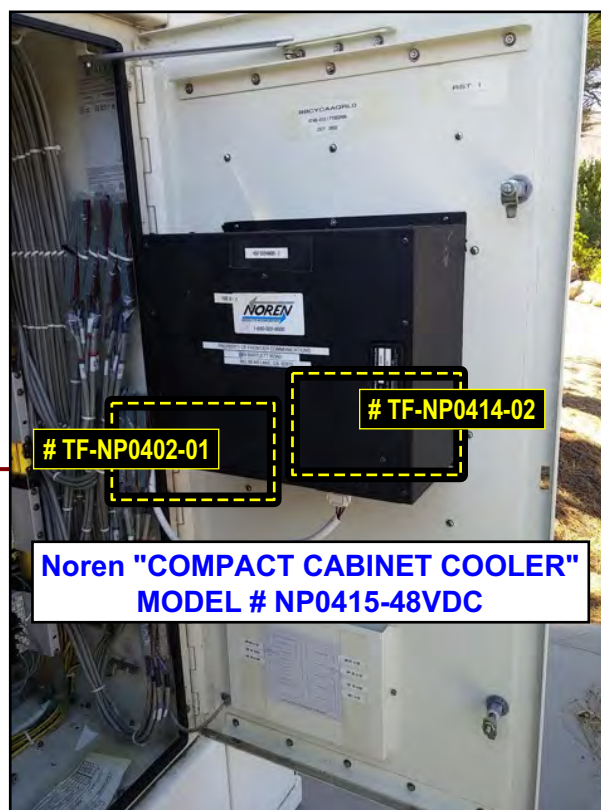


PN # TF-NP0402-01

48 Volt Replacement Heat Exchanger for
Noren Cooling Unit - Internal (6.71K)

w/ 3 Wire Open End & 3 Butt Splices

Internal fan (circulates the air inside the cabinet, located on lower half)



Noren "COMPACT CABINET COOLER"
MODEL # NP0415-48VDC

Lumen/CLK MAT #
1359019



PN # TF-NP0414-02

48 Volt Replacement Heat Exchanger for
Noren Cooling Unit - External (8.45K)

w/ 3 Wire Open End & 3 Butt Splices

External fan (circulates the air outside the cabinet, located on top half)

150 Cooper Rd. (F-15)
W. Berlin, NJ 08091

www.tagcords.com

Telephone: (856) 753-8585
Fax : (856) 768-7645

Telecom Assistance Group

OSP Cabinet Heat Exchanger Fans

PN # TF-MC225-01 *
(225mm) Heat Exchanger for
Mesa Cabinet (Top)

w/ Round Weatherproof Connector

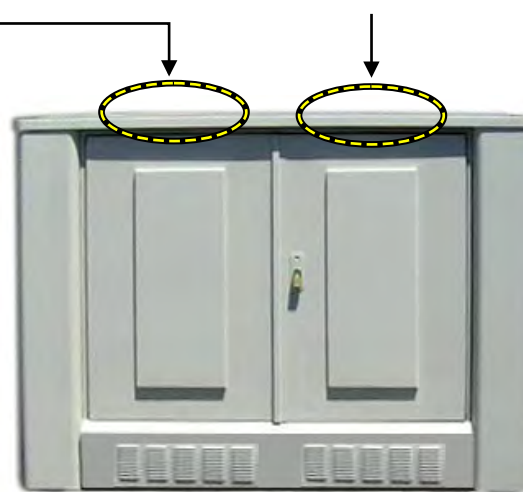
*Heat Exchangers are accessed
 through a panel on the solar shield
 (top / roof of cabinet)*



** use with existing bracket*

- ▶ **Common Replacement for :** EBM R1G225-AC73-XX (where XX=36,38,39,52)
 EBM R1G225-AF11-XX (where XX=13,14)
- ▶ **Typically used in Mesa Type Cabinets:** (QTY of 1) in a Mesa 2 Cabinet
 (QTY of 2) in a Mesa 4 Cabinet (shown below)

TOP / ROOF (SOLAR SHIELD)
OF MESA CABINET w/ EXISTING HEAT EXCHANGER



MESA 4 CABINET (FRONT VIEW)

Ordering Information:

TF-MC225-01 **(225mm) Heat Exchanger for Mesa Cabinet (Top)**
w/ Round Weatherproof Connector
(fan only - use with existing bracket)

Lumen/CLK MAT #

1345222

150 Cooper Rd. (F-15)
 W. Berlin, NJ 08091

www.tagcords.com

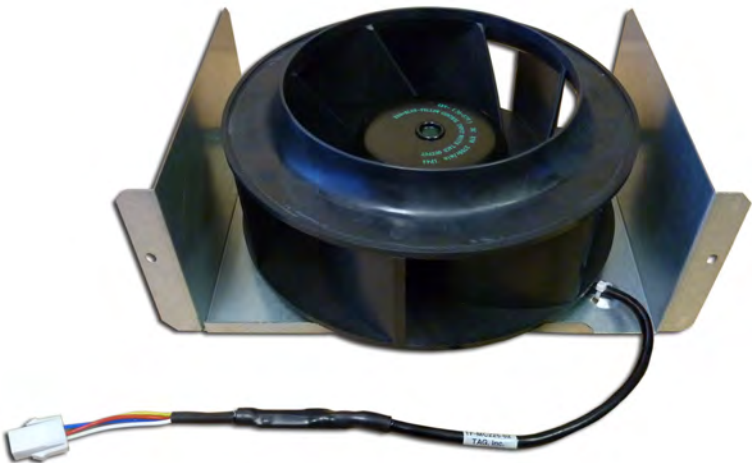
Telephone: (856) 753-8585
 Fax : (856) 768-7645

Telecom Assistance Group

OSP Cabinet Heat Exchanger Fans

PN # TF-MC225-02-KIT
(225mm) Heat Exchanger Kit
for Mesa Cabinet (Bottom)

- Kit includes:**
- (1) Heat Exchanger**
w/ 4 Wire Plug
&
 - (1) Mounting Bracket**
*(for fan without a Bracket,
order # TF-MC225-02)*

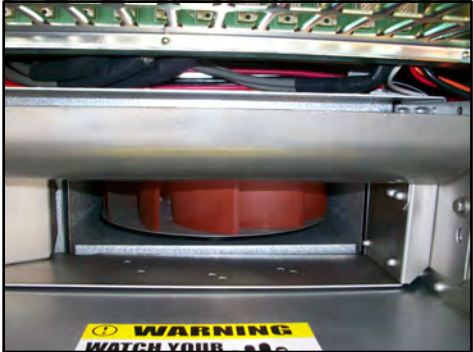


► **Common Replacement for :**

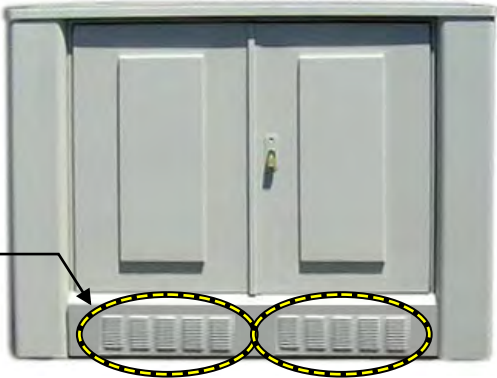
EBM R1G225-AC73-XX (where XX=36,38,39,52) EBM R1G225-AF11-XX (where XX=13,14)
EBM R1G225-AE07-11 EBM R1G225-AG39-10 EBM R1F250-AQ00-XK EBM R1G225-AG15-AA

- **Typically used in Mesa Type Cabinets:** (QTY of 1) in a Mesa 2 Cabinet
(QTY of 2) in a Mesa 4 Cabinet (shown below)

**INSIDE / BOTTOM VIEW OF MESA CABINET
w/ EXISTING HEAT EXCHANGER**



MESA 4 CABINET (FRONT VIEW)



Ordering Information:

Lumen/CLK MAT #

TF-MC225-02-KIT	(225mm) Heat Exchanger Kit for Mesa Cabinet (Bottom) w/ 4 Wire Plug & Mounting Bracket	1451725
TF-MC225-02 <i>(fan only)</i>	(225mm) Heat Exchanger for Mesa Cabinet (Bottom) w/ 4 Wire Plug	1345223
TFB-MC225-02 <i>(bracket only)</i>	Mounting Bracket & Hardware for Mesa Cabinet 225mm Bottom Heat Exchanger	1451078

150 Cooper Rd. (F-15)
W. Berlin, NJ 08091

www.tagcords.com

Telephone: (856) 753-8585
Fax : (856) 768-7645

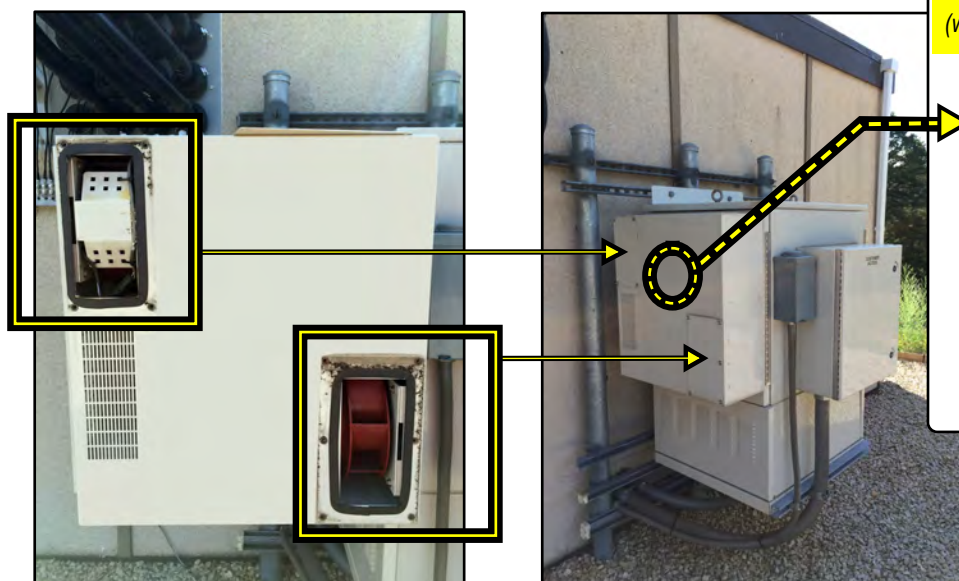
Telecom Assistance Group

PN # TF-MC225-01 *
(225mm) Cell Site Heat Exchanger for
Emerson Mesa XL Cabinet Door
 w/ Round Weatherproof Connector



*** use with
existing bracket**

CELL SITE LOCATION



(without replacing the whole door)



PN # TFC-MESA-01

Lumen/CLK MAT #

1345222



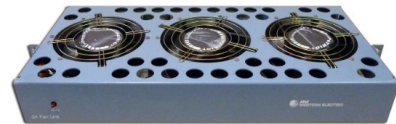

TFC-MESA-01 2 Port Mesa Cabinet Environmental Control Unit (ECU)
(used in Mesa Cell Site Cabinets: XL, SOLE, Span XL, Bridge, Edge & Sport)

Telephone: (856) 753-8585
Fax : (856) 768-7645



www.tagcords.com

Telecom Assistance Group

LUMEN / CENTURYLINK FAN TRAY REPAIR – ERT PROCESSING INFORMATION

REPAIR VENDOR PART #	SAP MAT CODE	MANUFACTURER PART #	PART DESCRIPTION ERT REPAIR DESCRIPTION & FUZZY SEARCH (Part #'s or Descriptions in <u>bold</u> show up in ERT search)	PICTURE OF TRAY	
<div> <div>Part Number</div> <div> <div>STEP 1</div> <div> SAP Material Code: <input type="text" value="1201094"/> HECI: <input type="text"/> </div> <div> Manufacturer Part Nbr: <input type="text" value="106527005-REPAIR"/> <div>STEP 2</div> <div>Search Clear</div> </div> <div> Part Description: <input type="text" value="DELETED REPAIR ATT FAN UNIT DUAL TRAY 1C"/> <div> After STEP 1 and STEP 2: Manufacturer Part Nbr and Part Description will be auto populated. Note: Disregard inactive or deleted in Part Description </div> </div> </div> </div>					
<div> <div>Ship Details</div> <div> <div>STEP 3: Fill in Ship Details</div> <div> <div>STEP 3</div> <div> From Address: <input type="text"/> From Zip: <input type="text"/> Serial Nbr: <input type="text"/> Vendor Name: <input type="text" value="TAG"/> </div> <div> From City: <input type="text"/> Contact Name: <input type="text"/> Equipment Error: <input type="text"/> Vendor Nbr: <input type="text" value="114887"/> <div>STEP 4</div> <div>Create</div> </div> <div> From State: <input type="text" value="▼"/> Contact Nbr: <input type="text"/> Tracking Number: <input type="text"/> </div> <div> STEP 4: Click "Create" to Generate a Shipping Label </div> </div> </div> </div>					
TFR-ALC1000-01	1025443	3EC15478AG	FAN TRAY REPAIR, Alcatel 1000, 3EC15478 (HECI: VAMYAAMGAA- HECI NOT IN SAP PORTAL)	ALCATEL 1000	
TFR-SLCAPW-01	1062881	UJB17H48S22	FAN TRAY REPAIR, Reltec/McLean SLC APW (TRAY # UJB17H48S22)	SLC APW	
TFR-LU2A-01	1451702	T1AYAA	FAN TRAY REPAIR, Lucent 2A	LUCENT 2A	
TFR-LU2B-01	1201093	105550420	FAN TRAY REPAIR, Lucent 2B (COMCODE: 105550420)	LUCENT 2B	

LUMEN / CENTURYLINK FAN TRAY REPAIR – ERT PROCESSING INFORMATION

REPAIR VENDOR PART #	SAP MAT CODE	MANUFACTURER PART #	PART DESCRIPTION ERT REPAIR DESCRIPTION & FUZZY SEARCH (Part #'s or Descriptions in <u>bold</u> show up in ERT search)		PICTURE OF TRAY
TFR-NXTLEV-01	1136989	T03MC 039167	FAN TRAY REPAIR, Next Level, T03MC 039167	NEXT LEVEL	
TFR-F2876A-01	1025443	F2876A	FAN TRAY REPAIR, NEC F2876A	NEC F2876A	
TFR-UMC1000-06		0310-1716 8650-0414	FAN TRAY REPAIR, Tellabs UMC1000, (6 fan) (AFC Tray # 0310-1716 or 8650-0414)	UMC1000 (6 FAN)	
TFR-UMC1000-08		4195091	FAN TRAY REPAIR, Tellabs UMC1000, (8 fan) (Tellabs Tray # 4195091)	UMC1000 (8 FAN)	
TFR-UMC1000-10		F10 # 0310-1716	FAN TRAY REPAIR, Tellabs UMC1000, (10 fan) (AFC Tray F10 # 0310-1716)	UMC1000 (10 FAN)	
TFR-NXWDL-01	1451023		FAN TRAY REPAIR, TAG Universal 19/23" Cabinet Fan Tray	UNIVERSAL 19/23"	
TFR-NXWDL-02	1472248		FAN TRAY REPAIR, TAG Universal 19/23" "Harsh Environment" Cabinet Fan Tray	UNIVERSAL 19/23" "HARSH ENVIRONMENT"	

LUMEN / CENTURYLINK FAN TRAY REPAIR – ERT PROCESSING INFORMATION

REPAIR VENDOR PART #	SAP MAT CODE	MANUFACTURER PART #	PART DESCRIPTION ERT REPAIR DESCRIPTION & FUZZY SEARCH (Part #'s or Descriptions in <u>bold</u> show up in ERT search)	PICTURE OF TRAY
TFR-LU2C-01	1088888	106382336	FAN TRAY REPAIR, Lucent 2C (COMCODE: 106382336 / 109198341)	
TFR-LU4A-01	1237468	106526742-REPAIR	FAN TRAY REPAIR, Lucent 4A (COMCODE: 106526742)	
TFR-LU4B-01	1201094 1156136	106527005-REPAIR	FAN TRAY REPAIR, Lucent 4B / 4G (COMCODE: 106527005 / 107378036)	
TFR-114A-01	1134261	114A TFC-114A-01	FAN TRAY REPAIR, 114A Fan Control Unit (COMCODE: 106894934)	
TFR-LS2000-02	1164081	KS23912L4-REPAIR	FAN TRAY REPAIR, Litespan 2000 HV PDFA (FAN TRAY# 509-0000-086)	
TFR-LS2000-44	1006831	500-1100-400	FAN TRAY REPAIR, Litespan 2000 DFA (DFA DC Fan Assembly # 500-1100-400)	