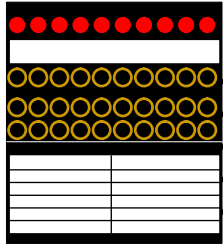


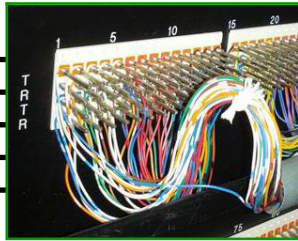
DS1 Disconnect Clean Up Cord, (10')

400210WB-10

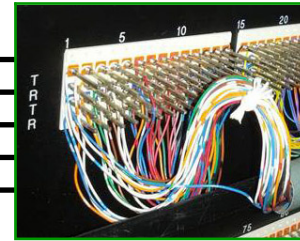
DSX JACK PANEL



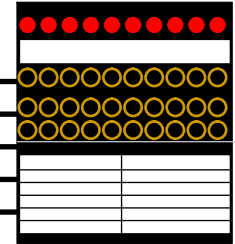
**(WIRE WRAPS)
TIE PAIR BLOCK**



**(WIRE WRAPS)
TIE PAIR BLOCK**



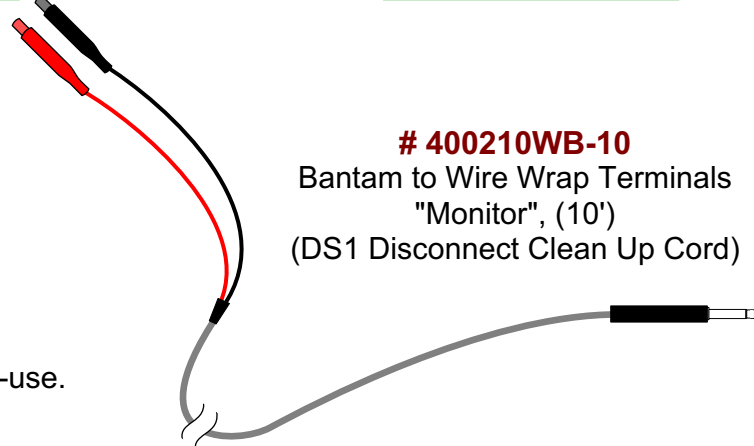
DSX JACK PANEL



Application:

- DSX test cord plugs on the DSX Tie Pair Blocks to verify back-logged DS1 disconnects. With shorthanded staff you can quickly verify traffic on each tie pair disconnect.
- **Problem:** Tie pair blocks are full and need to re-use.
- **Solution:** Use TAG's PN # 400210WB-10 along with a T-Berd to verify DS1 traffic on each tie pair.

400210WB-10
Bantam to Wire Wrap Terminals
"Monitor", (10')
(DS1 Disconnect Clean Up Cord)



T-BERD*
(not included)

Ordering Information:		AT&T PID #
400210WB-10	Bantam to Wire Wrap Terminals "Monitor", (10') (DS1 Disconnect Clean Up Cord)	ATT.100090491

150 Cooper Rd. (F-15)
W. Berlin, NJ 08091

www.tagcords.com
Telecom Assistance Group

Telephone: (856) 753-8585
Fax : (856) 768-7645