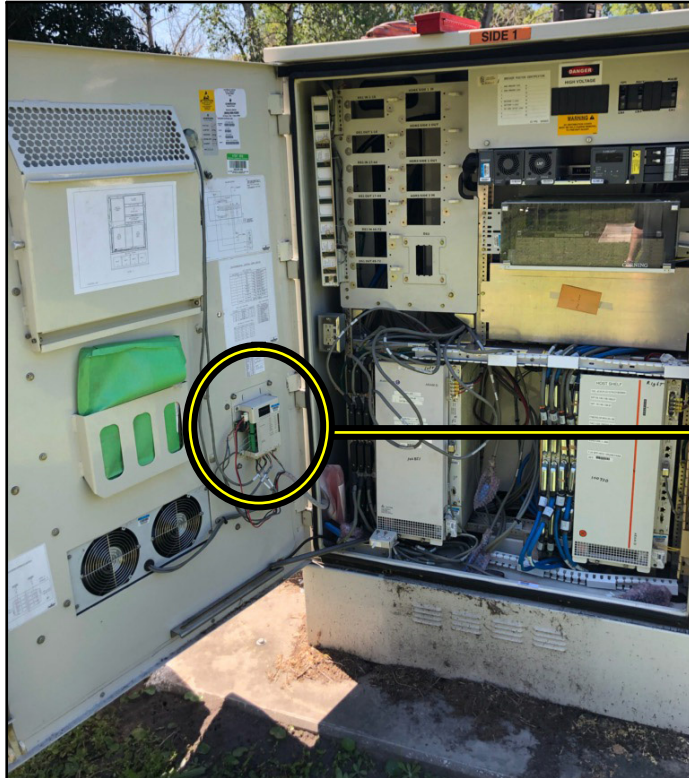


## 2 & 4 Port Environmental Control Unit (ECU) Replacements



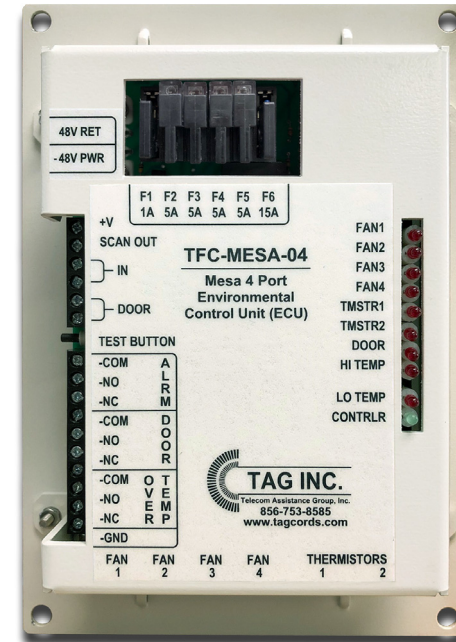
**INSIDE VIEW OF MESA 384 CABINET**  
(EXISTING ECU IS MOUNTED ON THE CABINET DOOR)

*used in Mesa 2  
DSLAM 192 & 384  
Type Cabinets*

### "4 Port Mesa ECU"

**PN # TFC-MESA-04**

**4 Port Environmental Control Unit (ECU) Replacement**



#### Ordering Information:

**TFC-MESA-04**

**4 Port Environmental Control Unit (ECU) Replacement**  
*(used in Mesa 2 - DSLAM 192 & DSLAM 384 Type Cabinets)*

**AT&T PID #**  
**ATT.200006902**

**TFC-MESA-02**

**2 Port Environmental Control Unit (ECU) Replacement - (not shown)**  
*(used in Mesa 2 - DSLAM 192 Type Cabinets)*

**ATT.200006901**

150 Cooper Rd. (F-15)  
W. Berlin, NJ 08091

[www.tagcords.com](http://www.tagcords.com)  
**Telecom Assistance Group**

Telephone: (856) 753-8585  
Fax: (856) 768-7645